



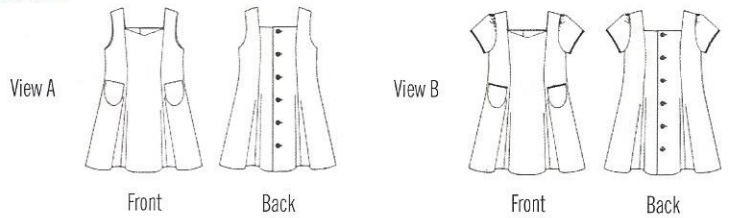
Introducing “a Wink and a Nod” Collection and “Cissy.”

The concept for “a Wink and a Nod” collection was sparked by frequent conversations and our favorite vintage patterns—designs our mothers and grandmothers may have used when we were children. We have taken the charming, wearable, simple designs of children’s patterns published in the 1940s and 50s, updated them to modern construction techniques using today’s swell sewing machines, resized them to current standards, and added some of our own design ideas. Our logo tag line says it all - **“The classics of yesteryear, back in full swing!”**

We are proud to offer you a Wink and a Nod’s -“Cissy.” Our inaugural pattern is a charming, back-buttoned, modified princess silhouette featuring a sassy flared skirt, a fully lined bodice, and a pair of perky pockets. The design flatters on all body shapes, offers a wide range of styling options, and is a perfect palette for hand and/or machine embellishments. Not only are all seven sizes included in the envelope, but the individual pattern pieces are unstacked for easy use - no tracing necessary. View A is sleeveless and View B has slightly gathered and lined cap sleeves. Both views are suitable for variety of fabrications and trims. Diagramed instruction sheets accompany the pattern to ensure ease of construction. Additional instructions for pattern variations and sample garments to enjoy are available at www.aWinkandaNodpatterns.com.

We think you’ll agree with us that...every little girl needs a “Cissy!”
Sally Whinghter & Cindy Foose

“Cissy” Pattern # 001
Sizes 2 - 8 (inclusive)



SIZES	2	3	4	5	6	7	8
BODY MEASUREMENTS							
Below are body measurements on which the pattern sizes were based. Actual pattern has ease added for comfort and movement. The finished garment will reflect this wearing ease.							
Chest Circumference	20"	21"	22"	23"	24"	25"	26 1/2"
Waist	20"	20 1/2"	21"	21 1/2"	22"	22 1/2"	23"
Neck Base	10"	10 3/8"	10 3/4"	11 1/8"	11 1/2"	11 7/8"	12 3/8"
Hip	21"	22"	23"	24"	25"	26 1/2"	28"
Upper Arm Circumference	6 1/8"	6 3/8"	6 5/8"	6 7/8"	7 1/8"	7 3/8"	7 3/4"
FABRIC REQUIREMENTS							
Dress Fabric 45" w/wo nap	1 3/8 yd	1 1/2 yd	1 5/8 yd	1 7/8 yd	2 1/8 yd	2 3/8 yd	2 1/2 yd
Dress Fabric 54-60" w/wo nap	1 3/8 yd	1 1/2 yd	1 5/8 yd	1 5/8 yd	1 7/8 yd	1 7/8 yd	2 yd
Suitable Lining 45" fabric	1/2 yd	1/2 yd	1/2 yd	1/2 yd	5/8 yd	5/8 yd	5/8 yd
Suitable Lining 60" fabric	1/2 yd	1/2 yd	1/2 yd	1/2 yd	1/2 yd	1/2 yd	1/2 yd
NOTIONS & SUPPLIES							
Buttons Required	Six 1/2" buttons	Six 1/2" buttons	Six 5/8" buttons	Seven 5/8" buttons	Eight 5/8" buttons	Nine 5/8" buttons	Nine 5/8" buttons
Interfacing	Two 2" wide strips of lightweight fusible interfacing cut to the following lengths:						
	17"	19"	21"	23"	24"	26"	28"
Thread	Thread to match the material and machine needles suitable for the fabric choices. #10 Sharp hand needle for finishing stitching.						
Suggested Fabrics	Medium to lightweight cotton or wool, linen, pique, featherwale corduroy, seersucker, twill, and chambray.						
FINISHED MEASUREMENTS							
Length	20 1/4"	22"	24 3/8"	26 1/4"	26 1/4"	31"	32"
Skirt Circumference	61"	64"	69"	73"	77"	81"	84"

“a Wink and a Nod” Collection
270 Church Road, Beech Island, SC 29842
Phone: (803) 827-1801
info@aWinkandaNodpatterns.com

Made in the USA! All rights reserved.

Graphic Design—Martha Schuman
Cover Illustration—Patricia Keay
Art Direction—Rachel Lamb