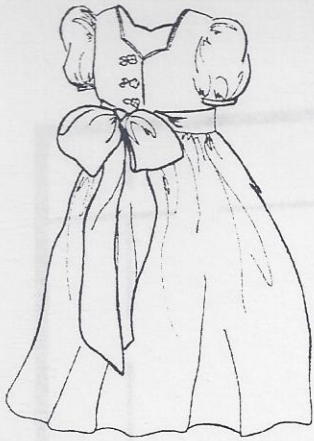


# Sweetheart Dress

This dress features a pretty sweetheart neckline in the front and back having the back dip lower for a feminine feel. There are optional inverted pleats of color in the skirt and sleeves, optional darts for the slender girl, dropped yoke line on smocked dress for a more grown-up look along with a waisted version for versatility.



## Materials Required

Size	7	8	10	12	14
<b>Smocked Dress with Sleeves</b>					
Dress Fabric 45" wide	3 yds	3	3	3 1/4	3 1/4
Contrast Fabric 45" wide	1 1/4 yd	1 1/4	1 1/4	1 1/3	1 1/3
Yoke Overlay - optional					
Fabric	16" w x 10" l	18" x 10"	18" x 12"	18" x 12"	18" x 12"
Swiss Eyelet Fabric	1/3 yd	1/3	1/2	1/2	1/2
<b>Smocked Sleeveless Dress</b>					
Reduce Dress Fabric above by 1/4 yard on all views.					
<b>Waisted Dress with Sleeves</b>					
Dress Fabric 45" wide	3 yds	3	3 1/4	3 1/2	3 1/2
Contrast Fabric 45" wide	1 1/4 yd	1 1/4	1 1/3	1 1/3	1 1/3
Yoke Overlay - optional					
Fabric	14" x 9"	14" x 9"	15" x 10"	16" x 10"	16" x 11"
Swiss Eyelet Fabric	1/2 yd	1/2	1/2	1/2	1/2
<b>Waisted Sleeveless Dress</b>					
Reduce Dress Fabric above by 1/4 yard on all views.					

**Overlay Note:** If using a yoke overlay, make sure the bodice fabric won't show through overlay. If needed, cut bodice front and front lining of a fabric similar to overlay.

**Notions:** quality sewing thread to match fabric and contrasting fabric, 3 to 4 each - 1/2" to 5/8" Mother of Pearl buttons, optional piping in a contrasting color.

**Fabrics Used: White Smocked Dress with Blue Pleats-** Swiss striped voile, Swiss silky cotton in blue and white for yoke overlay and pleats, contrasting pink silk used for piping made using speed cro-sheen cording, Sweetheart Embroidery Kit #200 - includes hand dyed lace appliqué, silk ribbons, overdyed rayon threads, beads and mother of pearl flower buttons.

**Lavender Silk Sleeveless Dress** - silk dupioni in lavender for dress and in green for pleats and piping, piping made using speed cro-sheen cording, Sweetheart Embroidery Kit #300 - including 2 hand dyed lace motifs and lace yardage for waist, overdyed and regular silk ribbons, beads and mother of pearl flower buttons.

**Floral Dress with Lavender Bow** - Liberty of London fabric "Mamie", lavender silk crepe for inverted pleats and bow.

**Blue Stripe Sleeveless Dress with Eyelet Bodice** - skirt and bodice back feature striped shirting, the bodice front and linings (front and back) are white lining fabric, yoke overlay is Swiss eyelet yardage, ribbon sashes are silk satin ribbon, bodice has silk satin rolled rose with brass bee buttons.

**Bonus Embroidery Stitches Included:** Twisty Rose and Bullion Tipped Leaves.

from Kari Me Away

7725 E. Camino Tampico, Anaheim Hills, CA 92808 -1040

(714) 921-9184 / E Mail us at Kari@KariMeAway.com

Copyright 1999, Kari Mecca