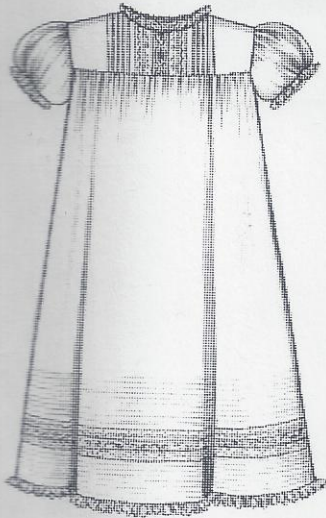


Heirloom Christening Gowns I

— Yoke Pattern Designs for Lace Bands and Tucks —



SUGGESTED FABRICS

100% cotton Swiss batiste, Swiss flannel, silk batiste, pima batiste, lawn, and 65% polyester, 35% cotton batiste, such as Imperial batiste

SUGGESTED LACES AND TRIMS

Fine cotton laces that are 90% cotton and 10% nylon, fine laces that are 100% cotton, handmade tatting, and 100% cotton Swiss eyelets and embroidered insertions

Yardages

The measurements below are *liberal estimates*. Exact measurement of pattern pieces may result in the purchase of *less* yardage. Because each seamstress will vary in the selection of trims, measurements are given by each individual section.

45" fabric:

Christening gown with short puff sleeve: **1 1/8 yd.**
Christening gown with long puff sleeve: **1 1/4 yd.**

Notions:

For back closing — 2 or 3 **1/4" buttons**

Neckline trims:

Entredeux — **15"**
Gathered 5/8" lace edging — **24"**
Flat trim — **15"**

Trim across front yoke, entredeux or Swiss eyelet insertion: **10"**

Trim across back yoke, entredeux or Swiss eyelet insertion: **10"**

Sleeve trims:

Entredeux — **2/3 yd.**
5/8" lace edging, to be gathered — **1 1/8 yd.**
Flat trim — **2/3 yd.**

Lace band and hemline trims:

Entredeux — **2 1/4 yd.** per row
Gathered lace edging — **4 — 4 1/2 yd.**
Flat trim — **2 1/4 yd.** per row

Heirloom Christening Gowns I is a yoke pattern that features a lace band, bordered by tucks, in both the yoke and the skirt. A long puff sleeve or a short puff sleeve may be used. The instructions and design features of this variation may be used with the wide variety of laces and trims available today to create many original designs. The Christening gown can be as unique as the laces and trims selected. It is an easy-to-sew design and is ideal for beginners or the more advanced seamstress who wants to add more detail. Includes sizes newborn, small, medium, and large.



Ginger Snaps Designs • P. O. Box 240728 • Montgomery, AL 36124
1-334-567-4239 • FAX 1-334-514-0014 • nancycoburn@aol.com

© Copyright, 2008. Nancy Coburn

All rights reserved. No part of this pattern may be reproduced or copied without permission in writing from the author.

Printed in U.S.A.