

Children's Corner

Bias Cut Lucy #241 Adaptation

using striped fabric

by Lezette Thomason



Fabric Requirements:

Size	Stripe Fabric	Lining	Ruffle Fabric	Buttons
1	5/8 yd	5/8 yd	1/4 yd	4
2	3/4 yd	3/4 yd	1/4 yd	4
3	7/8 yd	7/8 yd	1/4 yd	4
4	7/8 yd	7/8 yd	1/4 yd	4
5	1 yd	1 yd	1/4 yd	4
6	1 1/4 yd	1 1/4 yd	1/4 yd	4
7	1 1/2 yd	1 1/2 yd	1/4 yd	4
8	1 5/8 yd	1 5/8 yd	1/4 yd	4

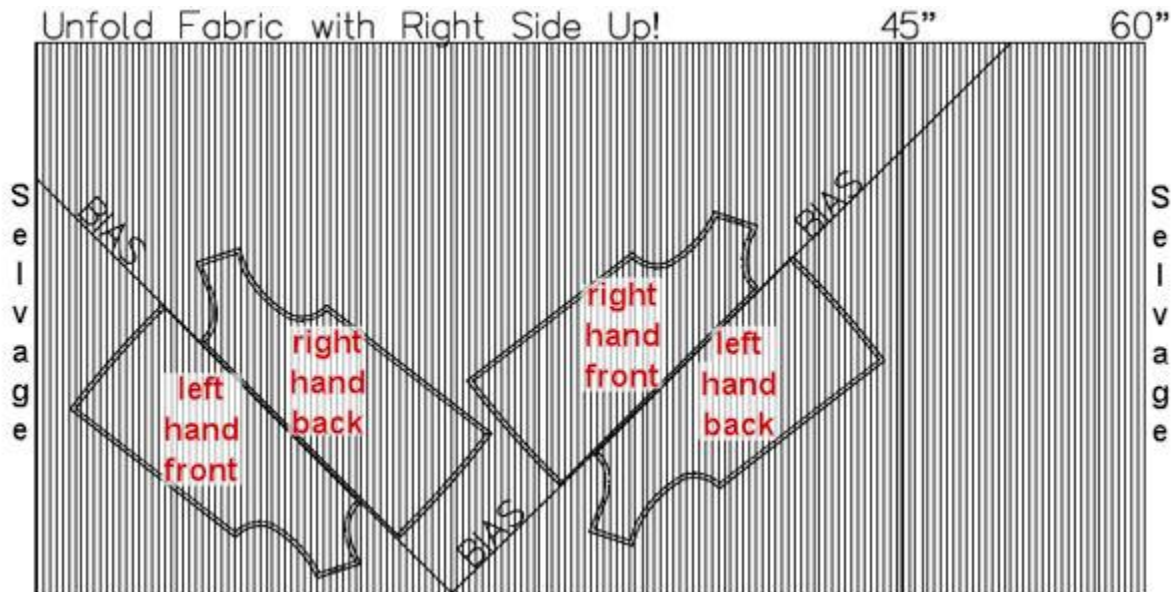
Directions:

Use **Lucy #241**
available in 1-4 and 5-8

1. Make copy of dress front and back of Lucy view A.
2. On copy, add a 1/4" seam allowance at center front and center back of dress.
3. On copy, cut 2" off bottom of dress front and back for ruffle.
4. Measure across bottom of new dress front pattern. This is 1/2 of front measurement. Multiply by 4. Cut two ruffles (one for front and one for back) that are 3 1/2" wide by length calculated. Lay ruffle pieces aside.
5. Cut lining using original pattern, adding 1" to bottom front and back skirt for hemming separately from dress.

6. Fold fabric on bias each way and mark. (See cutting layout.) Using "cutting layout", cut out 1 left-hand and 1 right-hand front and 1 left-hand and 1 right-hand back from striped fabric.

Note! Stripes should run at a downward angle toward center front and center back. You may have to flip pattern upside down. Do this step carefully. "Think twice and cut once!"



7. Front and back center seams: With right sides together stitch center front and center back seams using 1/4" seams. Press seams open or if serged, press seams to one side.

8. Construct dress using instructions in Lucy pattern.

9. Ruffles: With right sides together stitch together front and back ruffles. Finish seams and press to one side. Hem ruffle bottom with a "rolled hemmer" or serge, then press under 1/4" and topstitch. Stitch two lines of lengthened machine stitching one other long edge of ruffle, one 1/8" from raw edge and the second 3/8" from raw edge. Pull up ruffle to fit dress bottom. With right sides together stitch ruffle to dress bottom, matching side seams. Serge or overcast seam. Press seam up and topstitch to dress.

10. Turn under lining bottom 1/4" and press. Turn under again 1/4" and press. Topstitch lining hem in place and press.

Children's Corner

Children's Corner
718 Thompson Lane Ste. 104
Nashville, TN 37204
615-385-0303
800-543-6915

www.childrenscornerinc.com