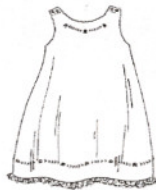


The Old Fashioned Baby

Emma's Smocked Baby Dresses

Patterns by The Old Fashioned Baby show the charm and daintiness that belong to every baby. These garments are designed to give baby the greatest comfort and freedom of movement. They come with complete, illustrated, easy to follow instructions.



Classic View 1

Fancy View 2

Back of both views

Slip

Bonnet

“Emma's Smocked Baby Dresses” was inspired by my friend Peggy's antique dress. The **View 1 Classic Dress** has a lace edged collar, smocked sleeves and little Rosebuds embroidered at the hem and collar. **View 2 Fancy Dress** features exquisite embroidery on the yoke and is trimmed with lace and entredeux at the neck and sleeves. The hem has two lace bands (each band is three pieces of lace) and is finished with lace edging. The sleeves also have lace bands. Both dresses have sweet tucks on either side of the back opening. **The Slip** buttons on the shoulders Gertrude style. The **Smocked Bonnet** has a lace band that matches the Fancy Smocked Dress.

Size - Infant to 6 months (to 18 lbs.)

Classic Dress V 1: Fabric - 1 1/4 yds.... of 45" wide fabric (1 yd. of 54" fabric), 1 7/8 yds.... of Lace Edging (3/8" wide)

Fancy Dress V2: Fabric 1 1/8 yd. of 45" wide fabric (7/8 yd. of 54" fabric), 1 3/8 yds. of Lace Edging for neck and sleeve (3/8" wide), 3 yds. of Lace Edging for Hem (3/8" or 1/2" wide), 8 1/2 yds.... of Lace Insertion A (3/8" or 1/2" wide) for hem and sleeves, 3 7/8 yds. of Lace Insertion B (3/8" or 1/2" wide) for hem and sleeves, 7/8 yds. of Entredeux for neck and sleeves.

Fancy Smocked Bonnet: Fabric - 1/4 yd, 2 5/8 yds. of Lace Insertion A (3/8"), 1 1/3 yds. of Lace Insertion B (3/8 to 1/2"), 1 yard of 1/2" wide Ribbon, 1/2 yard of 1/4" wide Ribbon.

Slip: Fabric 1/2 yd. , 1 1/8 yds. of Lace Edging (5/8" to 3/4" wide), 4 Buttons (1/4" wide)

Notions: Both dresses need 3 Buttons (5/16" to 3/8" wide) and tiny piping for the yoke. Floss for Smocking and Embroidery, #8 Crewel and #10 Sharps needles.