

oliver + s

DIFFICULTY:    

LULLABY LAYETTE SET PATTERN

\$16.95 US

SIZES: 0-3 M, 3-6 M, 6-12 M, 12-18 M + 18-24 M

Every baby needs a cute, comfortable layette set. These pieces work together to create a darling wardrobe for little ones up to 24 months. The bodysuit and shirt can be made with short or long sleeves and include a snap placket and pleats at the front and back. The bodysuit has elasticized leg openings and a snap placket for easy changes. The elasticized pull-on pants have a roomy fit and are quick to sew. And the reversible jacket features raglan sleeves and a snap closure.

SUGGESTED FABRICS: Light- to medium-weight woven fabrics like quilting cotton, voile, lawn, shirting, poplin, broadcloth, and linen. You can also use knits for the main fabrics, but we recommend lightweight woven fabrics for the bodysuit placket and bias binding and for the jacket bias binding. **NOTIONS:** BODYSUIT: Coordinating thread, 3/4 yard of 1/4" elastic, lightweight fusible interfacing, six size 15 (3/8") snaps. SHIRT: Coordinating thread, lightweight fusible interfacing, three size 15 (3/8") snaps. PANTS: Coordinating thread, 3/4 yard of 3/4" elastic. JACKET: Coordinating thread, lightweight fusible interfacing, three size 15 (3/8") snaps.

FABRIC GUIDE (fabric width: 44" - 45")

| SIZE | 0-3 M | 3-6 M | 6-12 M | 12-18 M | 18-24 M |
|--------------------------|------------|------------|------------|------------|------------|
| Views A and B, Fabric A | 3/4 yard | 3/4 yard | 1 yard | 1 yard | 1 yard |
| Views A and B, Fabric B* | 1/2 yard** | 1/2 yard** | 1/2 yard** | 1/2 yard** | 1/2 yard** |
| View C | 3/4 yard | 3/4 yard | 3/4 yard | 3/4 yard | 3/4 yard |
| View D, Fabric A | 3/4 yard | 3/4 yard | 3/4 yard | 1 yard | 1 yard |
| View D, Fabric B*** | 3/4 yard | 3/4 yard | 3/4 yard | 1 yard | 1 yard |

* Placket and neck binding ** Can use one fat quarter *** Lining

BIAS BINDING

| SIZE | 0-3 M | 3-6 M | 6-12 M | 12-18 M | 18-24 M |
|---------|-------------|-------------|-------------|---------|---------|
| View D* | 1 3/4 yards | 1 3/4 yards | 1 3/4 yards | 2 yards | 2 yards |

* Purchase premade 3/4" single-fold bias binding or make your own by cutting 1 1/2"-wide strips. Note that 1/2 yard of fabric makes approximately 10 yards of bias binding.

BODY MEASUREMENTS

| SIZE | 0-3 M | 3-6 M | 6-12 M | 12-18 M | 18-24 M |
|---------------|--------|--------|--------|---------|---------|
| Height | 18-23" | 23-27" | 27-29" | 29-31" | 31-33" |
| Weight (lbs.) | 7-12 | 12-17 | 17-22 | 22-27 | 27-30 |

For metric equivalents, see our website.

This pattern is for private use only. The images, layout, design, and other aspects of this pattern are copyright © Liesl + Co., Inc. 2014. If you wish to make and sell items from this pattern, please contact us for terms. Otherwise, no part of this design or pattern may be reproduced in any form. **MADE IN USA**



View A front



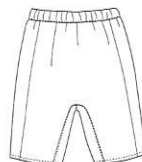
View A back



View B front



View B back



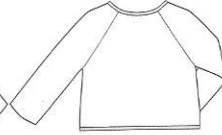
View C front



View C back



View D front



View D back

#OS046LL1



7 48252 15942 7



OLIVER + S IS PART OF LIESL + CO.

35 MEADOW STREET, STUDIO 316, BROOKLYN NY 11206

oliverands.com