

Elizabeth is a smocked tank top that buttons up the front. Straps can be made from fabric, lace or ribbon.

Includes instructions and pattern pieces for sizes x-small, small, medium, large and x-large

Top can be made without smocking by inserting elastic where smocking is.

1 3/8 yard fabric needed for 45" wide fabric  
3/4 yard fabric needed for 60" wide fabric  
7 (3/8") buttons

### **Suitable Fabrics:**

Lightweight jersey, cotton, cotton blend or any lightweight fabric.

Fits chest measurements:

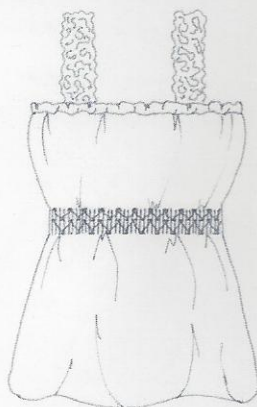
X-Small (2-4) - 28" - 30"

Small (6-8) - 31" - 33"

Medium (10-12) - 34" - 36"

Large (14-16) - 37" - 39"

X-Large (18-20) - 40" - 42"



Back View

FrancesJ4@aol.com  
www.francesmessinajones.com

© Frances Messina Jones 2008  
All rights reserved

Frances Messina Jones  
570 Hidden Blvd  
Mount Pleasant, 29464  
843-856-9032