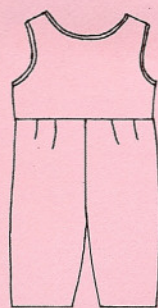
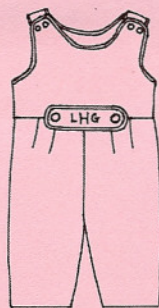
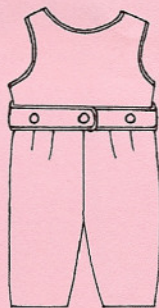


BABY LYRIC

A Lined Romper

Baby Lyric is a fully lined romper for boys or girls. It buttons on the shoulders and has pleats in the front & back pants. The pattern includes a reversible button on tab and a reversible button on belt for the little boys.



This view not shown on the front cover.

SIZE	45" ROMPER	45" LINING	60" ROMPER	60" LINING
6 MOS	7/8 YD	7/8 YD	2/3 YD	2/3 YD
12 MOS	1 YD	1 YD	2/3 YD	2/3 YD
18 MOS	1 YD	1 YD	3/4 YD	3/4 YD
24 MOS	1-1/8 YD	1-1/8 YD	3/4 YD	3/4 YD

SUGGESTED FABRICS: Light to medium weight fabrics such as broadcloth, lawn, linen, corduroy or pima cotton.

NOTIONS: Piping, 4 - 1/2" buttons for the shoulder straps, 5 - 5/8" buttons for the belt, 2 - 5/8" buttons for the tab.

This pattern was designed for my sweet friend, Lyric Gabriel Harris.

Brooke Polly Alexander is the artist for **Pintucks & Pettiecoats**.

©Pintucks & Pettiecoats
Paige Pettie Alexander
26915 Nick Davis Road
Athens, AL 35613

Behold, children are a gift from the Lord. Psalms 127:3



www.pintucksandpettiecoats.com

