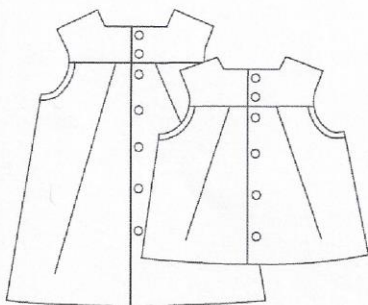


# #286 Poppy

Poppy has the classic silhouette of an A-line dress with the modern twist of tapered diagonal pleats. It is quick to construct. Detailed illustrated instructions teach how to make the unusual pleats so they look perfect and don't fall out! Poppy has a square neckline, a high lined yoke, and bias finished armholes. The shoulder is 1/2" wider than a sundress/jumper shoulder. It buttons down the back and may be made in a dress or blouse length.



Back View

In addition, Poppy contains pattern pieces and instructions for hidden side-seam pockets and a perfect little bow that can be used with many other Children's Corner patterns. Sweet in prints and elegant in solids, this dress can be made with a range of fabrics, including cotton lawn, quilting cotton, linen and corduroy. In sizes 1, 2, 3, 4 and 5, 6, 7, 8.

Difficulty: ● ● ○ ○ Moderate

Please visit [www.childrenscornerinc.com](http://www.childrenscornerinc.com) for explanation of difficulty ratings, and for help from our video tutorials.

Notions: 1/2" buttons (see chart)

| Size   | 1                                  | 2      | 3     | 4     | 5     | 6     | 7      | 8      |
|--|------------------------------------|--------|-------|-------|-------|-------|--------|--------|
| <b>Fabric Requirements in Yards (45" or 60")</b> |                                    |        |       |       |       |       |        |        |
| Dress 60"  | 1                                  | 1      | 1     | 1 1/8 | 1 1/8 | 1 1/4 | 1 1/4  | 1 3/8  |
| Dress 45"  | 1                                  | 1      | 1 1/8 | 1 1/4 | 1 3/8 | 1 1/2 | 1 1/2  | 1 5/8  |
| Blouse 60"                                       | 7/8                                | 7/8    | 1     | 1     | 1     | 1 1/8 | 1 1/8  | 1 1/8  |
| Blouse 45"                                       | 7/8                                | 7/8    | 1 1/8 | 1 1/8 | 1 1/4 | 1 1/4 | 1 1/4  | 1 3/8  |
| Buttons (1/2") for Dress                         | 6                                  | 6      | 7     | 7     | 7     | 8     | 8      | 9      |
| Buttons (1/2") for Blouse                        | 6                                  | 6      | 7     | 6     | 6     | 7     | 7      | 8      |
| Contrasting Bow                                  | 4" x 8" piece of fabric or 1/8 yd. |        |       |       |       |       |        |        |
| <b>Finished Garment Measurements in Inches</b>   |                                    |        |       |       |       |       |        |        |
| Dress Length from Shoulder                       | 16                                 | 17 1/2 | 19    | 21    | 23    | 25    | 26 1/2 | 28 1/2 |
| Blouse Length from Shoulder                      | 14 1/2                             | 15     | 16    | 17    | 18    | 19    | 20     | 21     |
| Front Width                                      | 8                                  | 8 1/4  | 8 1/2 | 8 3/4 | 9 1/4 | 9 1/2 | 10     | 10 3/4 |
| Back Width                                       | 8                                  | 8 1/2  | 9     | 9 1/4 | 9 3/4 | 10    | 10 1/2 | 11     |

©Copyright 2013 Children's Corner  
 Approved for use by home-sewers only  
 Not for use by manufacturers  
 Printed in USA

Children's Corner  
 718 Thompson Lane  
 Nashville, TN 37204  
 1-800-543-6915