

Ellen is a pattern for a girl's sundress, jumper or tunic. The lined yoke features a cross-over front accented with wide contrasting bands. The unlined skirt has a few gathers in the center front and center back. The skirt bottom is finished with the wide contrasting bands like the yoke. Ellen buttons down the back. Tunic show with purchased jeans. Ellen is available in sizes 3-6 and sizes 7-12.

Fabric Requirements

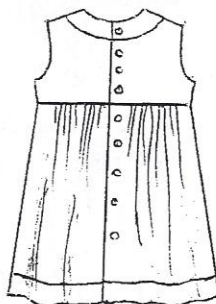
Size	Dress (45")	Tunic(45")	Dress (60")	Tunic(60")	Skirt/Top Bands(45")	Skirt/Top Bands(60")	Lining
3	3/4 yd.	5/8 yd.	5/8 yd.	1/2 yd.	1/2 yd.	1/4 yd.	1/4 yd.
4	7/8 yd.	5/8 yd.	3/4 yd.	5/8 yd.	1/2 yd.	3/8 yd.	1/4 yd.
5	7/8 yd.	5/8 yd.	3/4 yd.	5/8 yd.	1/2 yd.	3/8 yd.	1/4 yd.
6	1 yd.	3/4 yd.	1 yd.	3/4 yd.	1/2 yd.	3/8 yd.	1/4 yd.
7	1 1/8 yd.	7/8 yd.	1 1/8 yd.	3/4 yd.	1/2 yd.	3/8 yd.	3/8 yd.
8	1 1/2 yd.	1 yd.	1 1/4 yd.	3/4 yd.	1/2 yd.	3/8 yd.	3/8 yd.
10	1 5/8 yd.	1 1/8 yd.	1 1/4 yd.	7/8 yd.	1/2 yd.	3/8 yd.	3/8 yd.
12	1 5/8 yd.	1 1/4 yd.	1 3/8 yd.	1 yd.	1/2 yd.	3/8 yd.	1/2 yd.

Notions: Buttons: Tunic: 7, Dress or Jumper: 8 for Sizes 3-4, 9 for Sizes 5-12

© Copyright 2010
Children's Corner
Printed in USA

Children's Corner
718 Thompson Lane
Nashville, TN 37204
1-800-543-6915

Size	Finished Length
3	19"
4	21"
5	22 1/2"
6	25"
7	26 1/2"
8	28"
10	30 1/2"
12	33"



Back View