

Kitty is a precious A-lined sundress or jumper. The top of the dress front is finished with a self ruffle. Side vents that button at the underarm are for ease in getting the dress on and off. The straps are a continuation of a little curved back yoke. Note! Straps should be lined with an extra layer of fabric if fabric is lightweight for extra stability. Dress is lined and may be lengthened if desired. Blouse pattern buttons down the front and features a piped Peter Pan collar. The short fitted sleeves are piped at the bottom edge and finished with a bias band that is stitched to inside of sleeve.

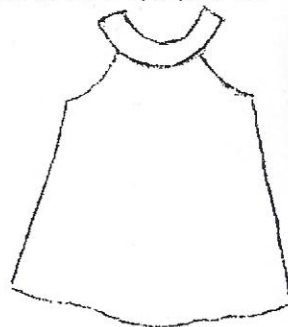
Fabric Requirements

Size	1	2	3	4	5	6
Dress (60")	5/8 yd.	5/8 yd.	5/8 yd.	3/4 yd.	3/4 yd.	7/8 yd.
Dress Lining (60")	1/2 yd.	1/2 yd.	5/8 yd.	3/4 yd.	3/4 yd.	7/8 yd.
Dress (45")	3/4 yd.	7/8 yd.	1 yd.	1 yd.	1 1/8 yd.	1 1/4 yd.
Dress Lining (45")	5/8 yd.	3/4 yd.	7/8 yd.	7/8 yd.	7/8 yd.	1 yd.
Contrasting Ruffle	1/4 yd.	1/4 yd.	1/4 yd.	1/4 yd.	1/4 yd.	1/4 yd.
Blouse	5/8 yd.	3/4 yd.	7/8 yd.	7/8 yd.	7/8 yd.	1 yd.

Notions: Jumper buttons: 4 (1/2"), Blouse buttons: 4 (3/8") for sizes 1-4, 5 (3/8" for sizes 5-6, Cording for piping

Children's Corner
 718 Thompson Lane
 Nashville, TN 37204
 1-800-543-6915

©Copyright 2007
 Children's Corner
 Printed in USA



Back View