

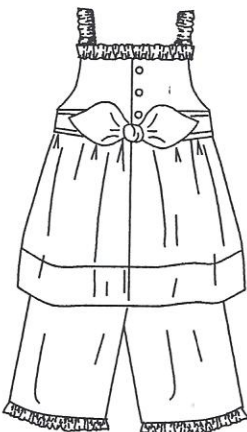


# Trisha's Treasures

By Trisha Smith

The "**Jessica**" pattern, aka, "Cute As A Button Capri Set", is a fun two piece playwear garment.

The top is accented with a 1" ruffle across the upper edges and the shoulder straps are made by running elastic through a tube to create a shirring effect for more ruffles. The garment is made more interesting by using two coordinating fabrics. The top has a decorative sash that ties pretty in the back for added interest. It also has a very easy to do "Fold - Press - Cut Placket" that you will love and use again and again. The pants are lined and have an elastic waist. They also have a 1" ruffle at the lower edge. Another option for this garment would be to lengthen the top and make it a fun summer dress. My beautiful little model for this garment is Jessica. She is the grand daughter of my friend Jean Glore. Thank you Jean, Jessica, and Jim for the wonderful photos.



## Fabric Requirements

45" or 60" wide fabric - with or without nap  
 Note: The striped fabric I used was a diagonal print.  
 I did not cut pieces on the bias.

	Fabric 1 Top, Pants		Fabric 2 Top, Sash, Ruffles	Lining Fabric
	45"	60"	45" or 60"	45" or 60"
Size 2-3	1 1/2 yd	1 1/4 yd	1 1/2 yd	5/8 yd
Size 4-5-6	1 2/3 yd	1 1/2 yd	1 5/8 yd	3/4 yd
Size 7-8	1 7/8 yd	1 3/4 yd	1 3/4 yd	7/8 yd

**Notions:** Thread, 3/4" Elastic: 1 yard, 1/4" Elastic: 1 yard, 1 Decorative Button to embellishing sash, 3/8" or 1/2" Buttons: three, 45" Fusible Interfacing: 1/4 yard

## Finished Measurements

Size	Length		Waist
	Top	Capri's	Capri's
2	16"	15"	20 1/2"
3	17"	17"	21 1/2"
4	18"	19"	22 1/2"
5	19"	21"	23"
6	20"	22"	23 1/2"
7	21"	24"	24"
8	22"	26"	24 1/2"

Finished length on pants includes the 1" ruffle.

Trisha Smith  
 673 Sneed Road West  
 Franklin, TN 37069  
 (615) 662-4823

trishasdesigns@comcast.net  
 Facebook:  
 Patterns by Trisha's Treasures

Cover Photography: Jim Glore  
 Graphics: Rebecca A. Smith  
 Model: Jessica