



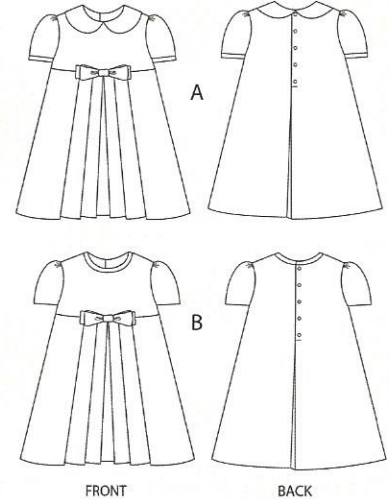
Introducing “a Wink and a Nod” Collection and “Dolly!”

The concept for “a Wink and a Nod” collection was sparked by frequent conversations and our favorite vintage patterns—designs our mothers and grandmothers may have used when we were children. We have taken the charming, wearable, simple designs of children’s patterns published in the 1940s and 50s, updated them to modern construction techniques using today’s swell sewing machines, resized them to current standards, and added some of our own design ideas. Our logo tag line says it all - “The classics of yesteryear, back in full swing!”

She’s here - she has arrived! We are delighted to finally introduce to you one of our absolute favorite classic dresses, a Wink and a Nod’s “Dolly.” This little charmer is a must have for every little girl. Our “Dolly” pattern offers a wealth of options for variation and fabrication in a simple-to-construct garment that flatters every figure type across a wide arrange of sizes. The assembly process is suitable for anyone with basic construction/sewing skills. Diagramed instruction sheets accompany the pattern to ensure ease of construction. Additional instructions for pattern variations and sample garments to enjoy are available at www.FarmhouseFabrics.com.

We think you’ll agree with us that...every girl needs a “Dolly!”
Sally Whinghter & Cindy Foose

“Dolly” Pattern # 005
Sizes 3 - 8, 10



SIZES	3	4	5	6	7	8	10
BODY MEASUREMENTS							
<i>Below are body measurements on which the pattern sizes were based. Actual pattern has ease added for comfort and movement. The finished garment will reflect this wearing ease.</i>							
Chest Circumference	21"	22"	23"	24"	25"	26 1/2"	28"
Waist	20 1/2"	21"	21 1/2"	22"	22 1/2"	23"	24"
Neck Base	10 3/8"	10 3/4"	11 1/8"	11 1/2"	11 7/8"	12 3/8"	12 7/8"
Hip	22"	23"	24"	25"	26 1/2"	28"	30"
Upper Arm Circumference	6 3/8"	6 5/8"	6 7/8"	7 1/8"	7 3/8"	7 3/4"	7 3/4"
FABRIC REQUIREMENTS							
54" Dress Fabric required	1 3/4 yds	1 7/8 yds	2 yds	2 1/8 yds	2 1/4 yds	2 3/8 yds	2 1/2 yds
Contrasting fabric for Bias Bow	5/8 yard (or a 21" by 21" square)						
NOTIONS & SUPPLIES							
Buttons Required	Four 1/2" buttons	Four 5/8" buttons	Four 5/8" buttons	Five 5/8" buttons	Five 5/8" buttons	Six 5/8" buttons	Six 5/8" buttons
Collar Interfacing	3/8 yd or 14" square	3/8 yd or 14" square	1/2 yd or 16" square	1/2 yd or 16" square	1/2 yd or 16" square	1/2 yd or 16" square	1/2 yd or 16" square
2" Wide Interfacing Strips	23"	25"	25 1/4"	29"	30"	32"	43"
Sewing Notions	Thread to match the material and machine needles suitable for the fabric choices. #10 Sharp hand needle for finishing stitching						
Suggested Fabrics	Medium to lightweight cotton and wool, linen, pique, featherwale corduroy, seersucker, twill, and chambray.						
FINISHED LENGTH MEASUREMENTS							
Length	22"	24 1/4"	25 1/2"	27 1/4"	30 1/2"	33 1/2"	32 1/2"
Skirt Bottom Circumference	57"	61"	66"	69"	72"	73"	74"

“a Wink and a Nod” Collection
270 Church Road, Beech Island, SC 29842
Phone: (803) 827-1801
Email: info@awinkandanodpatterns.com

Made in the USA! All rights reserved.
Graphic Design—Martha Schuman



234321 23454

