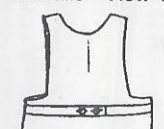


This pattern is multi-sized. It is recommended that you trace the pattern pieces onto lightweight interfacing. Refer to instructions for detailed body measurements, make adjustments to pieces before cutting. See instructions for detailed listing of manufacturers of fabrics and trims.

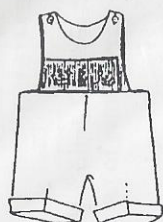
# Long & Short Overalls



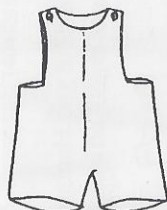
Boy's Long  
Overalls - View 1



Boy's Back View



Boy's Short  
Overalls - View 2



Boy's Short  
Overalls - View 3



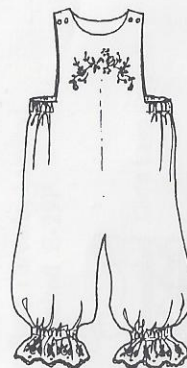
Boy's Shirt  
Short Sleeve View 1



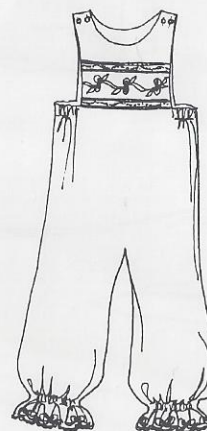
Boy's Shirt  
Long Sleeve - View 2



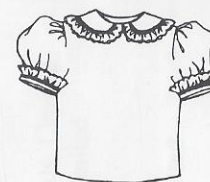
Boy's Shirt  
Square Collar - View 3



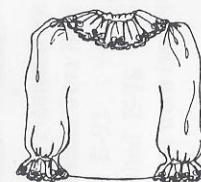
Girl's Knickers  
View 4



Girl's Long Overalls - View 5



Girl's Short Sleeve  
Blouse - View 4



Girl's Long Sleeve  
Blouse - View 5

Consult instructions for size of insert and number of rows to pleat and smock.

**Sizes (Small 6 Mo. - 3, Large 3 - 6)**

Sizes	6 Mo.	1	2	3	4	5	6
<b>Body Measurements</b>							
Chest	19	20	21	22	23	24	25
Back To Waist	7 1/2	8	8 1/2	9	9 1/2	10	10 1/2
Approximate Height	29	32	35	38	41	44	47

## 45" Material Requirements

### Boy's Shirt Or Girl's Blouse

Short Sleeve With Peter Pan Collar (Views 1 & 4)

5/8

2/3

2/3

3/4

3/4

3/4

7/8

Long Sleeve With Peter Pan Collar (Views 2 & 5)

7/8

7/8

1

1

1

1 1/8

1 1/8

Square Collar Add 1/3 Yard Extra (View 3)

### Overalls (Allow Same Yardage For Lining)

Boy's Short (Views 2 & 3)

3/4

3/4

3/4

7/8

7/8

7/8

7/8

Girl's Knickers (View 4)

3/4

7/8

7/8

7/8

7/8

1

1

Boy's & Girl's Long (Views 1 & 5)

1

1

1

1 1/8

1 1/8

1 1/4

1 1/4

Insert

1/8

1/8

1/8

1/8

1/8

1/8

1/8

## Notions

3/8" or 1/2" Buttons (Shirt)

4 - 5

3/4" Buttons (Overalls) or

2

3/8" - 1/2" Buttons

4

Piping (Collar & Sleeves)

1 1/4 Yard

Piping (Insert)

2/3 Yard

1/2" Lace (Cuffs, Square Collar) (View 3)

3 1/4 Yards

Entredeux (Optional) (Square Collar, Cuffs)

1 5/8 Yards

Bias Tape (Shirt Collar)

1/2 Yard

Wide Eyelet (Collar & Sleeves) (View 5)

2 Yards

Wide Eyelet (Knickers) (View 4)

1 1/2 Yards

Narrow Eyelet (Collar & Sleeves) (View 4)

2 Yards

Embroidered Insertion (View 5)

1/3 Yard

Entredeux Insertion (View 5)

2/3 Yard

1/2" Elastic

Suitable Fabrics - Broadcloth, Linen, Fine Wale Corduroy, Baby Cord,  
Or Velveteen