

Infant Snowdrift

This sweet little dress is the last in the Snowdrift series. Make it as a little dress with bias bound sleeves or as a sleeveless sundress/jumper. Smock it in the front or front and back, lavish it with lace for an heirloom look or just leave it plain to let the fabric tell the story. Three design plates have been included along with the most adorable little diaper cover panties. For more ideas on how to create your own special ensemble, see the Designer's Notes inside.

Pattern Sizing

Size	A	B	C	D
Weight	11 lbs.	14 lbs.	20 lbs.	26 lbs
Chest Measure	17"	18"	19"	20"
Height	24"	26 ¾"	29 ½"	32 ¼"
Dress Length – Bk. Neck to Hem approx.	13.5"	14.5"	15"	16.5"

Fabric Requirements based on 45" fabric

View A	1¼ yd.	1¼ yd.	1½ yd.	1½ yd.
	1.15 m	1.15 m	1.4 m	1.4 m
View B	1 yd.	1 yd.	1¼ yd.	1¼ yd.
	0.9 m	0.9 m	1.15 m	1.15 m
Diaper Cover + Lining	¾ yd.	¾ yd.	¾ yd.	¾ yd.
	0.6 m	0.6 m	0.6 m	0.6 m

Suggested Fabrics: Cotton broadcloth, quilting cottons, brushed and polished cottons, cotton blends, seersucker, novelty cottons, dress-weight linen or silk.

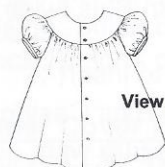
½ yd. or 1 pkg. interfacing

Accessories/Notions: Thread to match fabric, scissors, 18" ruler, fading marker, pencil and paper for tracing pattern, pinking shears, pins, point turner, small safety pin or narrow bodkin, sewing machine. For smocking: pleater or iron-on dots & iron, thread for gathering, embroidery floss and needles for smocking.

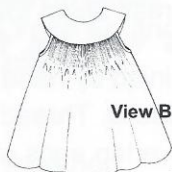
View A: 6 – 8 buttons ¾" wide

View B: 4 buttons ½" wide

Diaper Cover: 1 pkg. each ¼" and ⅜" elastic.



View A Back



View B Back

Diaper Cover Bk



Infant Snowdrift designed by Judith Marquis ©2013

Amberlane & Amberpetites
67 London Rd., Newmarket, ON Canada
www.amberlane.ca