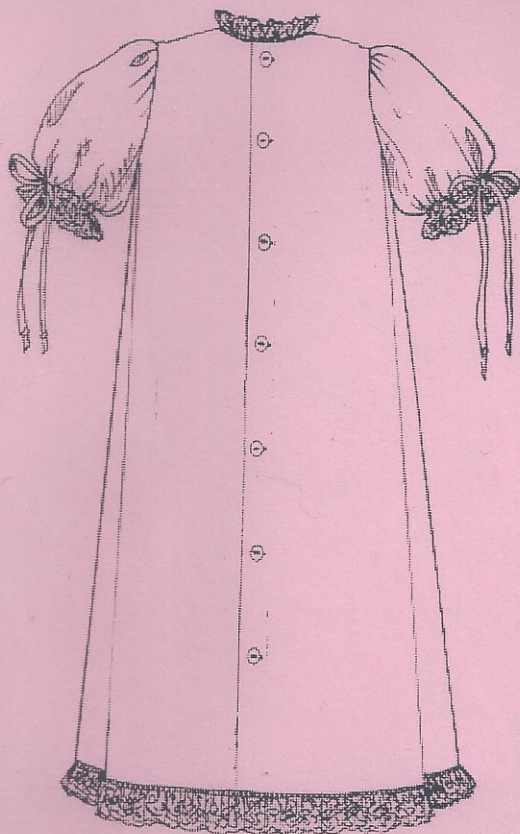


Back view:



Yardages:

The measurements below are *liberal estimates*. Exact measurement of pattern pieces may result in the purchase of *less* yardage. Because each seamstress will vary in the selection of trims, measurements are given by each individual section.

45" fabric:

Preemie: 1 1/2 yd.

Newborn, Infant, and Large: 1 3/4 yd.

Entredeux:

Neckline: 15"

Sleeves: 1/2 yd.

Hemline: 1 5/8 yd.

Lace edging (to be gathered):

Neckline: 30"

Sleeves: 1 yd.

Hemline: 2 1/2 yd.

Beading for sleeves: 1/2 yd.

1/4" - wide double-faced satin ribbon: 1 1/2 yd.

7 - 8 3/8" buttons

Embroidery thread

The design presented in "A-Line Christening Gowns I" is an elegant, simple design that is easy to sew. Sizes newborn, infant, and large are 36" long, while the preemie gown is 27" long. Sleeve variations include a long puff sleeve and an elbow-length puff sleeve. Fullness is added to the A-line design with the addition of pintucks. The gown has a back button closing.

The pattern itself may be used with any of the designs in Ginger Snaps' **Baby Daygowns, Book I** and **Dresses for Toddlers, Book I**. Ideas for A-line Christening gowns seem to be everywhere — greeting cards, heirloom sewing magazines, and antique garments. Any A-line baby dress or daygown provides ideas for details to make unique A-line Christening gowns. Most of the time, the design work can be completed on a block of fabric and then the gown can be cut out by the pattern piece. The "A-Line Christening Gowns I" pattern is one that can be used over and over in a variety of ways, providing almost endless opportunities for creating one-of-a-kind designs.



Ginger Snaps Designs • P. O. Box 240728 • Montgomery, AL 36124
1-334-567-4239 • FAX 1-334-514-0014 • nancycoburn@aol.com

© Copyright, 2006. Nancy Coburn

All rights reserved. No part of this pattern may be reproduced or copied without permission in writing from the author.

Printed in U.S.A.