

Rose

OAD97
Children Sizes 2-10

Dress and matching 18" Doll Dress

Rose is an easy dress to sew with pintucks in the front and soft gathers in the back. The dress can be made with a single fabric or with a coordinating yoke fabric. For a dressy look, the yoke can be made with lace. Hook & eye closures in the back. Pattern includes a matching 18" doll dress which also fits the "Best Buds" olive ann doll. Model is 45" tall wearing a size 6.

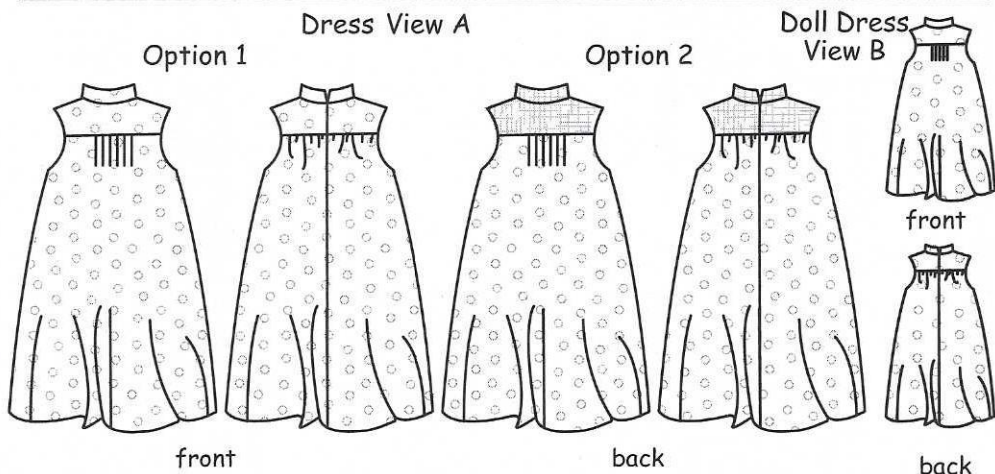
Fabric on the cover: Mona Luna

Fabric Requirements (yards)

Size 2 3 4 5 6 7 8 10

View	Option	2	3	4	5	6	7	8	10
View A Dress	Option 1: Dress	1 $\frac{1}{3}$	1 $\frac{3}{8}$	1 $\frac{1}{2}$	1 $\frac{1}{2}$	1 $\frac{5}{8}$	1 $\frac{3}{4}$	1 $\frac{7}{8}$	1 $\frac{7}{8}$
	Option 2: Dress	1 $\frac{1}{4}$	1 $\frac{1}{4}$	$\frac{1}{4}$	1 $\frac{1}{3}$	1 $\frac{3}{8}$	1 $\frac{1}{2}$	1 $\frac{3}{4}$	1 $\frac{3}{4}$
	Yoke - $\frac{3}{8}$ for all sizes								
52"-54" without 1-way design	Option 1: Dress	1	1	1	1 $\frac{1}{8}$	1 $\frac{1}{4}$	1 $\frac{1}{4}$	1 $\frac{3}{8}$	1 $\frac{1}{2}$
	Option 2: Dress	$\frac{7}{8}$	1	1	1	1	1 $\frac{1}{8}$	1 $\frac{1}{4}$	1 $\frac{3}{8}$
	Yoke - $\frac{3}{8}$ for all sizes								

View B Doll Dress Dress (option 1) $\frac{1}{2}$ yd or Dress (option 2) - $\frac{1}{3}$ yd and yoke - $\frac{1}{3}$ yd



Finished Measurements										Body Measurements									
Sizes	2	3	4	5	6	7	8	10	Sizes	2	3	4	5	6	7	8	10		
View A & B Dress										Chest									
Chest	23"	24"	25"	26"	27"	28"	29"	30"	Chest	21"	22"	23"	24"	25"	26"	27"	28 $\frac{1}{2}$ "		
Waist	20"	20 $\frac{1}{2}$ "	21"	21 $\frac{1}{2}$ "	22"	23"	23 $\frac{1}{2}$ "	25"	Waist	20"	20 $\frac{1}{2}$ "	21"	21 $\frac{1}{2}$ "	22"	23"	23 $\frac{1}{2}$ "	25"		
Length	22"	23"	24"	25"	26"	27 $\frac{1}{2}$ "	29"	30 $\frac{1}{2}$ "	Hip	21 $\frac{1}{2}$ "	22"	23"	24 $\frac{1}{2}$ "	25 $\frac{1}{2}$ "	26 $\frac{1}{2}$ "	28"	30"		

