

# Penelope

## Dress and matching 18" Doll dress

**OAD88**  
Children Sizes 2-10

A fun little dress for all ages that works for both play and dressy times. Cute ruffle outlines the neck and scooped back. The dress has a fully lined bodice that buttons in the back. Sizes 2-6 have a sassy sash for a large bow and sizes 7-10 have a smaller tie. Options include making the ruffle and or bow in the same fabric as the dress or with a coordinating fabric. Comes with a matching doll dress pattern that fits most 18" dolls or the "Best Buds" olive ann doll.

### Fabric Requirements (yards)

**View A**      **Size**      2      3      4      5      6      7      8      10

**Dress** (with same fabric ruffle & bow)

42"-45" wide fabric	2 $\frac{3}{8}$	2 $\frac{3}{8}$	2 $\frac{1}{2}$	2 $\frac{1}{2}$	2 $\frac{5}{8}$	2 $\frac{5}{8}$	2 $\frac{3}{4}$	
44"-45" wide fabric (this width is required for size 10)								→ 2 $\frac{7}{8}$
54"-60" wide fabric	1 $\frac{7}{8}$	1 $\frac{7}{8}$	2	2	2 $\frac{1}{8}$	2 $\frac{3}{8}$	2 $\frac{1}{2}$	2 $\frac{1}{2}$

**Dress** (does not include fabric for ruffle or bow)- see coordinating ruffle fabric requirements)

42"-45" wide fabric	1 $\frac{3}{4}$	1 $\frac{7}{8}$	1 $\frac{7}{8}$	2	2	2 $\frac{1}{8}$	2 $\frac{1}{8}$	
44"-45" wide fabric (this width is required for size 10)								→ 2 $\frac{1}{4}$
54"-60" wide fabric	1 $\frac{1}{2}$	1 $\frac{3}{8}$	1 $\frac{1}{2}$	1 $\frac{1}{2}$	1 $\frac{5}{8}$	1 $\frac{3}{4}$	1 $\frac{7}{8}$	2

**Coordinating Ruffle & Bow** -  $\frac{3}{4}$  yard - all sizes

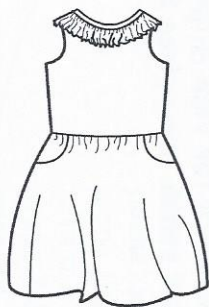
**View B Doll dress** (self ruffle)      42"-54" dress & ruffle -  $\frac{3}{4}$  yd

**View B Doll dress** (coordinating ruffle) 42"-54" dress -  $\frac{5}{8}$  yd ruffle -  $\frac{3}{8}$  yd

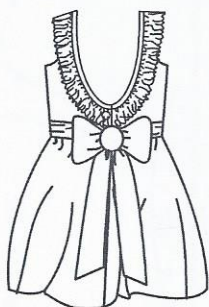
**Required materials:** All views: thread, two  $\frac{1}{2}$ " to  $\frac{5}{8}$ " buttons,  
View A: 1  $\frac{3}{8}$ " snap; View B: four  $\frac{1}{4}$ " snaps

**View A Dress**

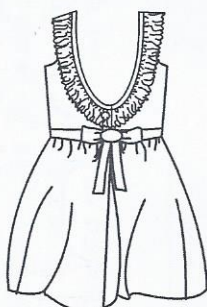
**View B Doll Dress**



front



back sizes 2-6



back sizes 7-10

add snaps



front

back

### Finished Measurements View A Dress

Sizes	2	3	4	5	6	7	8	10
Chest	22"	23"	24"	25"	26"	27"	28"	29 $\frac{1}{2}$ "
Length	20 $\frac{1}{2}$ "	22"	21 $\frac{1}{2}$ "	22"	22 $\frac{1}{2}$ "	24"	25 $\frac{1}{2}$ "	27"
Hem circumference	56"	58"	62"	64"	66"	74"	78"	82"

### Body Measurements

Sizes	2	3	4	5	6	7	8	10
Chest	21"	22"	23"	24"	25"	26"	27"	28 $\frac{1}{2}$ "
Waist	20"	20 $\frac{1}{2}$ "	21"	21 $\frac{1}{2}$ "	22"	23"	23 $\frac{1}{2}$ "	25"
Hip	21 $\frac{1}{2}$ "	22"	23"	24 $\frac{1}{2}$ "	25 $\frac{1}{2}$ "	26 $\frac{1}{2}$ "	28"	30"

*olive ann designs*

copyright 2013 T Ann Blair  
All Rights Reserved

pH. 503-233-0533

ann@oliveannndesigns.com  
www.oliveannndesigns.com



1 51420 13088 1