



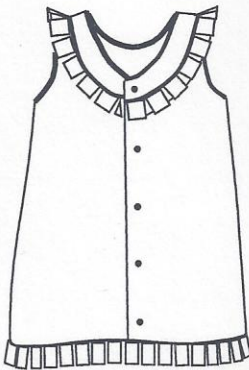
# Trisha's Treasures

By Trisha Smith

The Makenzie dress, (aka "A Line Dress with Pleated or Gathered Trim"), is a shift style dress with added charm. The neck, armhole edges, and lower edge of neckband are accented with a contrasting corded piping. The neckband has a pleated or gathered trim at the lower edge and the hemline is accented with the same. This dress could also be made without the neckband because it is placed on top of a full dress which simplifies the construction process. It is fully lined, buttons down the back, has a scooped out neckline, and looks best at mid knee length or slightly shorter. The Makenzie pattern is named after a sweet teenage girl

I had the privilege of teaching in my Kid's Camp one summer.

Makenzie is the granddaughter of Diane Head and niece of Shanna Smith, two of my dear friends.



### Fabric Requirements

45" or 60" wide - with or without nap

\* For sizes 10 and 12 only - if using a fabric that is only 45" wide, with nap or a one way design, buy an additional 3/8 yard.

Size	Outer Fabric	Lining	Contrasting for Pleats or Ruffle	Buttons
4/5/6	1 1/8 yards	7/8 yard	3/4 yard	5
7/8	1 1/4 yards	1 yard	3/4 yard	5 - 6
10/12	1 1/2 yards	* 1 1/8 yards	3/4 yard	6 - 7

Contrasting fabric for making corded piping : 1/3 yard for all sizes

**Notions:** Thread, Fusible Interfacing - 1/3 yard, Buttons - 1/2" - 5/8" (varies according to size), Cording or Premade Piping - up to 3 yards.

### Finished Length

High point on shoulder to bottom edge of dress.  
Includes 2" pleated or gathered trim.

Size	Length
4	22 1/2"
5	24 1/2"
6	26"
7	28"
8	30"
10	31 1/2"
12	33"

Trisha Smith  
673 Sneed Road West  
Franklin, TN 37069  
(615) 662-4823

trishasdesigns@comcast.net  
Facebook: Patterns by Trisha's Treasures

Cover Photography: Carol Foriest  
Graphics: Rebecca A. Smith  
Models: Brysan and Emerson