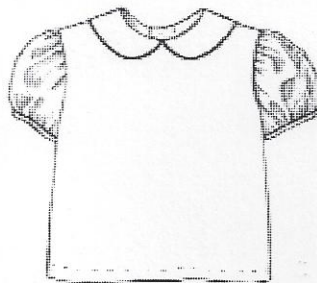


# Mary Hayden's Blouse I

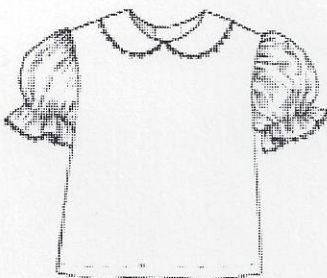
Sizes 2 — 8

Back Button Blouse with Peter Pan Collar and Short Puff Sleeves

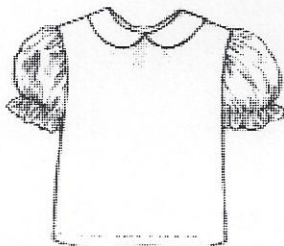
## Variations:



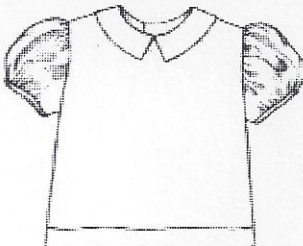
Corded Peter Pan Collar  
and Puff Sleeve



Rick Rack on Peter Pan  
Collar and Ruffle Sleeve



Plain Peter Pan Collar  
and Puff Sleeve  
with Self-Ruffle



Pointed Collar  
with Puff Sleeve  
and Hemline Band

## Back View:



**BLOUSE DESCRIPTION:** "Mary Hayden's Blouse I" is a basic blouse pattern with a Peter Pan collar and short puff sleeves. It is designed to be worn with many items in your child's wardrobe, including jumpers, skirts, pants, and shorts. It may be tucked into a waistline or worn as a overblouse with a plain hem or embellished hem. Several collar and sleeve variations are included, but additional variations may be used from other books and patterns making the blouse suitable for casual or dressy occasions. This multi-sized blouse pattern includes sizes 2 — 8.

## YARDAGES:

The measurements below are *liberal* estimates. Exact measurement of pattern pieces may result in the purchase of less yardage.

45" fabric:

Sizes 2 - 4T: 1 7/8 yd.

Sizes 4R - 8: 2 yd.

Contrast fabric for pointed collar and hemline band: 1 yd.

Flat trim for Peter Pan collar: 2/3 yd.

Flat trim for sleeve with bias binding: 5/8 yd.

Flat trim for sleeve with self-ruffle:  
1 1/4 yd.

Notions: 4 3/8" buttons  
2 nylon snaps

## STANDARD SIZE CHART

Size	2	3	4T	4R
Chest	21"	22"	23"	23"
Back Waist Length				9 1/2"
Size	5	6	7	8
Chest	24"	25"	26"	27"
Back Waist Length	10"	10 1/2"	11 1/2"	12"



# Ginger Snaps Designs

Ginger Snaps Designs • P. O. Box 240728 • Montgomery, AL 36124

• FAX 1-334-514-0014 • Address comments or questions in writing via mail or FAX.