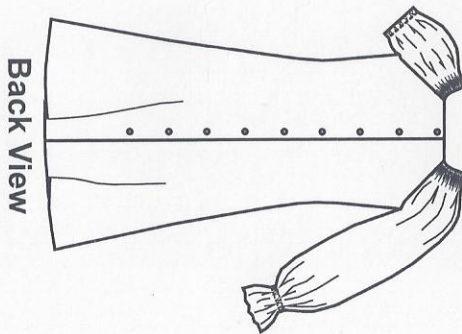


Chest	19"	20"	21"	22 1/2"	24"	25"	26"	27"	28 1/2"	30"	32"	34"
Back neck to waist	8"	8 1/2"	9"	9 1/2"	10"	10 1/2"	11 1/2"	12"	12 3/4"	13 1/2"	14 1/4"	15"
Sizes	1	2	3	4	5	6	7	8	10	12	14	16
Short sleeves												
45" fabric requirement*	7/8 yd	1 yd	1 yd	1 1/3 yd	1 1/2 yd	1 5/8 yd	2 1/8 yd	2 1/4 yd	2 7/8 yd	3 1/8 yd	3 1/6 yd	3 1/3 yd
45" fabric requirement**	7/8 yd	1 yd	1 yd	1 1/3 yd	1 1/2 yd	1 5/8 yd	1 3/4 yd	1 7/8 yd	2 1/3 yd	2 1/2 yd	2 2/3 yd	2 7/8 yd
60" fabric requirement*/**	3/4 yd	1 1/8 yd	1 1/4 yd	1 1/8 yd	1 1/6 yd	1 1/4 yd	1 1/3 yd	1 2/3 yd	1 7/8 yd	2 1/8 yd	2 1/6 yd	2 1/8 yd
Long sleeves												
45" fabric requirement*	1 1/8 yd	1 1/4 yd	1 1/4 yd	1 7/8 yd	2 yd	2 1/8 yd	2 2/3 yd	2 7/8 yd	3 2/3 yd	3 7/8 yd	4 yd	4 1/6 yd
45" fabric requirement**	1 1/8 yd	1 1/4 yd	1 1/4 yd	1 7/8 yd	2 yd	2 1/8 yd	2 1/3 yd	2 1/2 yd	3 1/8 yd	3 1/3 yd	3 3/8 yd	3 2/3 yd
60" fabric requirement*/**	7/8 yd	1 yd	1 1/8 yd	1 3/8 yd	1 1/2 yd	1 5/8 yd	1 3/4 yd	2 1/3 yd	2 2/3 yd	2 7/8 yd	3 yd	3 1/3 yd
1/2" buttons	6	7	7	8	8	9	9	10	10	11	11	12
1/4" elastic for neck casing	12"	13"	14"	15"	16"	17"	18"	19"	20"	21"	22"	23"
1/4" elastic for short sleeve	8"	8 1/4"	8 1/2"	8 3/4"	9"	9 1/4"	9 1/2"	10"	10 1/2"	11"	11 1/2"	12"

* with nap; ** without nap

Note: Garment bodice with casing is suitable only for light weight fabrics.

Www.MajasHeirlooms.com
©Maja's Heirlooms 2005



Larkin is an A-line dress with a bishop style neck on the front and sleeves. The neck edge can be finished with a casing with elastic or a bias neck band. Short sleeves are finished with elastic and long sleeves are smocked at the cuff leaving a ruffle. The dress closes in the back with buttons.