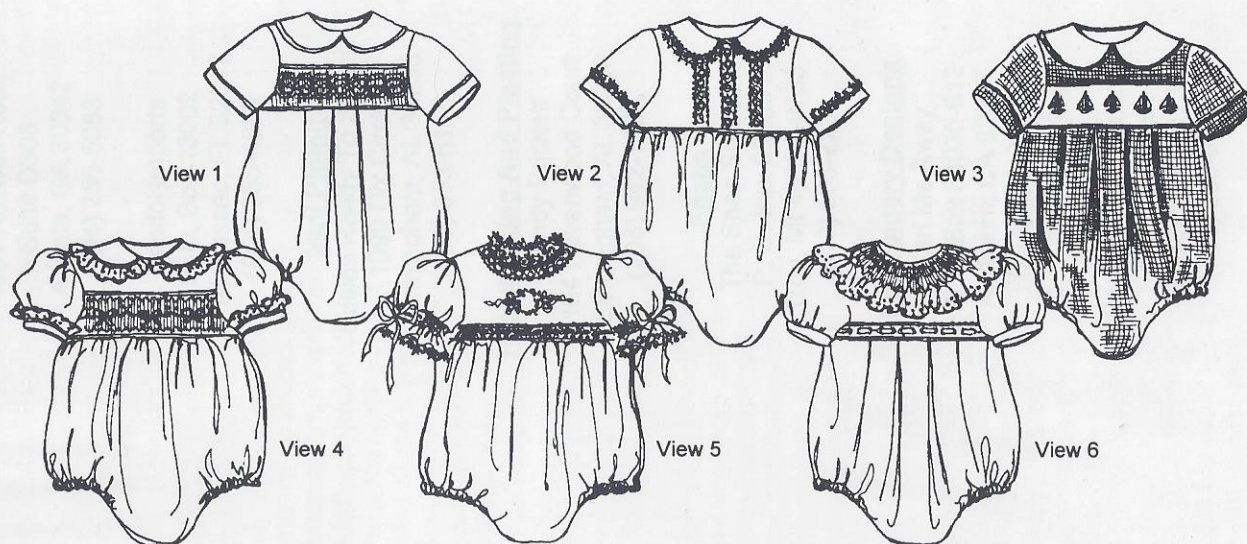


This pattern is multi-sized. It is recommended that you trace the pattern pieces onto lightweight interfacing. Refer to instructions for detailed body measurements, make adjustments to pieces before cutting. See instructions for detailed listing of manufacturers of fabrics and trims.

## Baby Bubbles



Sizes	3 Mo.	6 Mo.	12 Mo.	18 Mo.	24 mo.
<b>Body Measurements</b>					
Chest	17"	18"	19"	20"	21"
Approximate Height	17" - 24"	24" - 26 1/2"	26 1/2" - 31"	31" - 34"	34" - 36"
<b>45" Material Requirements</b>					
All Views	1 1/8	1 1/8	1 1/4	1 1/4	1 1/4
Number of Pleating Rows	8	8	8	8	8
Number of Smocking Rows (Based on 3/8" needle spacing)	6	6	6	6	6
<b>Lace &amp; Other Requirements</b>					
1" Eyelet Edging (View 4) Collars, Sleeves				2 Yards All Sizes	
Tatted Insertion (View 2) Bodice				5/8 Yard All Sizes	
Tatted Insertion (View 5) Neck				1/2 Yard All Sizes	
Tatted Edging (View 2) Collars, Sleeves				1 1/4 Yards All Sizes	
Tatted Edging (View 5) Neck, Sleeves				1 1/2 Yards All Sizes	
Tatted Beading (View 5) Bodice, Sleeves				1 1/4 Yards All Sizes	
5" Eyelet Edging (View 6)				2 Yards All Sizes	
Eyelet Beading (View 6) Bodice				3/4 Yard All Sizes	
Embroidered Insertion (View 3)				1/3 Yard All Sizes	
<b>Suggested Materials &amp; Other Notions - 3 each 3/8" Pearl Buttons, 1/4" Elastic, Snaps or Snap Tape, Mini-Piping</b>					