

This pattern is multi-sized. It is recommended that you trace the pattern pieces onto lightweight interfacing. Refer to instructions for detailed body measurements, make adjustments to pieces before cutting. See instructions for detailed listing of manufacturers of fabrics and trims. All smocking designs are by Chery Williams and are available as Smocking Plates from Chery Williams Patterns.

Basic Bishop



View 1



View 2



View 3



View 4



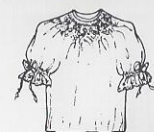
View 5



View 6



View 7



Short Sleeve Blouse



Long Sleeve Blouse

*** Sizes**

Small

Large

2 3 4 5 6 6 7 8 10 12

45" Material Requirements & Other Measurements

Sleeveless Overlay Collar Dress (View 1) Plain Hem	1 1/2	1 5/8	1 2/3	1 7/8	2	2	2 1/8	2 1/4	2 1/4	2 1/3
Angel Sleeve Dress (Views 2, 5, and 6)	1 5/8	1 1/2	1 7/8	2	2 1/8	2 1/8	2 1/4	2 3/8	2 1/2	2 1/2
Short Sleeve Dress (View 7)	1 3/4	1 7/8	2	2 1/8	2 1/4	2 1/4	2 1/3	2 1/2	2 1/2	2 5/8
Long Sleeve Dress (View 4)	2	2 1/8	2 1/4	2 1/2	2 5/8	2 5/8	2 3/4	2 7/8	3	3 1/8
Short Sleeve Blouse/Dropwaist Bodice (View 3)	1	1 1/8	1 1/8	1 1/4	1 1/3	1 1/3	1 3/8	1 1/2	1 5/8	1 2/3
Long Sleeve Blouse/Dropwaist Bodice	1 1/4	1 1/3	1 1/2	1 5/8	1 2/3	1 2/3	1 3/4	1 7/8	2	2 1/8
** Suggested # rows - smocking	6	6	7	7	8	8	9	9	10	10
Contrasting Short Sleeve (Views 5 and 6)	1/3 Yard - All Sizes					1/3 Yard - All Sizes				

Dress Width at Hem Edge

Finished Back Length

51	52	53	54	55	55	56	57	58	59
19	21	23	25	27	27	29	31	33	35

Lace Requirements

Lace Edging for "Mock" Collar (View 4)	2 7/8	2 7/8	3	3	3 1/8	3 1/8	3 1/8	3 1/4	3 1/4	3 1/3
Lace Edging for Sleeves	1 1/8	1 1/8	1 1/4	1 1/4	1 1/4	1 1/4	1 1/4	1 1/4	1 1/4	1 1/4
Lace Edging for for Front Placket (View 2)	2 1/8	2 1/4	2 1/3	2 5/8	2 3/4	2 3/4	3	3 1/8	3 1/4	3 1/3
Lace Edging for Pockets (View 4)	1 Yard - All Sizes					1 Yard - All Sizes				
Eyelet for Angel Sleeves (View 6)	7/8	7/8	1	1	1	1	1	1	1 1/8	1 1/8
Eyelet for Overlay Collar (Views 1 and 7)	2 1/8	2 1/8	2 1/4	2 1/4	2 1/3	2 1/3	2 3/8	2 1/2	2 1/2	2 1/2
Wide Eyelet Flouncing (View 3)	1 2/3	1 2/3	1 3/4	1 3/4	2	2	2	2	2	2
Wide Beading Insertion (Hips) (View 3)	3/4	3/4	3/4	7/8	7/8	7/8	7/8	1	1	1
Entredeux Beading for Sleeves (View 3)	5/8 Yard - All Sizes					5/8 Yard - All Sizes				
Eyelet for Sleeves (View 3)	1 Yard - All Sizes					1 Yard - All Sizes				
Fancy Band (View 1)	Same as Dress Width at Hem Edge					Same as Dress Width at Hem Edge				
Eyelet Hem Ruffle (View 1)	2 Times Yardage of Fancy Band					2 Times Yardage of Fancy Band				

Suggested Materials and Other Notions - Imperial Batiste, Imperial Broadcloth, Imperial Smocking Stripe, co-ordinating or contrasting piping for neckband and bound sleeves, 1/8" elastic for sleeves, 3 elastic loops, 3 shank buttons (back opening) and 8 - 12 buttons (front opening).

*** For babies & infants, use Baby Bishops Pattern from Chery Williams Patterns** **** Based on needle spacing of 16 row pleater.**