

Juliet is a girl's dress with a square neckline that slips over the head. This is allowed by a front and back neckline casing with 1/4" elastic on the front and back yokes that stretches over the child's head. There are also casings at the underarm that allow the child more room, but the 1/4" elastic in this casing lets the dress fit perfectly on many size girls. There are three casings for elastic at the waistline shirring the fabric between the front and back necklines and waistline. The skirt then flows from the elasticized waist to knee length. The armholes feature self-lined cap sleeves. Juliet is available in sizes 1, 2, 3, and sizes 4, 5, 6.

Fabric Requirements

	45"	60"	1/4" elastic
Size 1	1 3/8 yd	1 1/8 yd	2 1/4 yd.
Size 2	1 1/2 yd	1 1/4 yd	2 3/8 yd
Size 3	1 5/8 yd	1 1/2 yd	2 1/2 yd
Size 4	1 3/4 yd	1 5/8 yd	2 5/8 yd
Size 5	1 7/8 yd	1 3/4 yd	2 3/4 yd
Size 6	2 yd	1 7/8 yd	3 yd

Finished waist Length

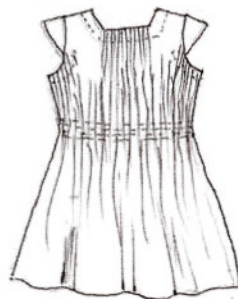
Shoulder to bottom casing line

Size 1	7 7/8"
Size 2	9"
Size 3	9 3/8"
Size 4	10 1/8"
Size 5	10 3/8"
Size 6	11"

Finished Dress Length

Shoulder to bottom

Size 1	17 1/2"
Size 2	19 1/2"
Size 3	23"
Size 4	24"
Size 5	27"
Size 6	29 1/2"



Back View

Children's Corner
718 Thompson Lane
Nashville, TN 37204
1-800-543-6915

©Copyright 2011
Printed in USA