

Lizzie's Playground & Party Dress

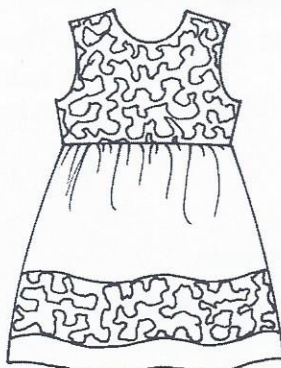
by Ellen McCarn®

The instruction booklet included has over 40 step-by-step illustrations for this versatile and "Sew Easy" to make garment pattern. Mix and match the necklines with sleeves or no sleeves, "button-on" ribbon sashes (or not) for many more combinations than shown. This pattern has "grown up" with this designer's Granddaughter pictured on the cover at Age 2 / Size 2, and Age 6 / Size 6. We hope you enjoy the pretty dresses as much as we have!

View A (Pictured on Cover)
Scoop Neck Dress



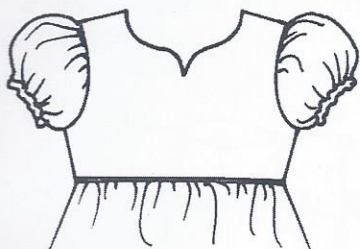
View B (Pictured on Insert)
Color Block Dress



View C Sundress



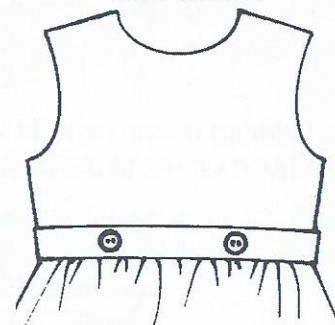
View D Short Sleeves w/
Sweetheart Neckline



View E Angel Sleeves &
Sleeves with Round Neck



View F Jumper w/
Round Neck



Yardages are for just below knee length with 5" hem allowances. Finished dress length is measured from top of shoulder to hem in back. Lengths are bracketed for average to tall. Yardages are separated for ease in choosing multi colors.

Fabric yardages: Sizes 1-4 use 42-44" wide; Sizes 5-8 use 60" wide fabric.

| Sizes: | 1 | 2 | 3 | 4 | 5 | 6 | 7 | 8 |
|------------------------------|--------|----------|---------|----------|----------|--------|----------|--------|
| Finished Dress Length | 16-17" | 18-19" | 20-22" | 22-23" | 24-25" | 26-27" | 28-30" | 30-32" |
| Finished Skirt Length | 9-10" | 10½-11½" | 12.-14" | 13½-14½" | 14¼-15¼" | 16-17" | 17¾-19¾" | 19-21" |
| View A | ¾ | 1 | 1 | 1 | 1 | 1 | 1¼ | 1¼ |
| Bodice | ⅓ | ⅓ | ⅓ | ⅓ | ⅓ | ⅓ | ⅓ | ½ |
| Lining | ⅓ | ⅓ | ⅓ | ⅓ | ⅓ | ⅓ | ⅓ | ½ |
| Skirt | ½ | ⅔ | ⅔ | ⅔ | ⅔ | ⅔ | ¾ | ¾ |
| Short Sleeve | ⅓ | ⅓ | ⅓ | ⅓ | ⅓ | ⅓ | ⅓ | ⅓ |
| Angel Sleeve | ¼ | ¼ | ¼ | ¼ | ⅓ | ⅓ | ⅓ | ⅓ |
| Ribbon Sash | 2 | 2 | 2 | 2 | 2½ | 2½ | 2½ | 2½ |
| Elastic in inches per sleeve | 7" | 7" | 7" | 7¼" | 7½" | 7½" | 8" | 8" |

Notions: 1/2" to 3/4" buttons for back of bodice. 7/8" to 1" buttons for sash; all-purpose thread, 1/8" to 1/4" elastic for sleeves. Piping if desired for piped waistline, or purchase extra fabric and piping string if making it.

Sizes 1-4

Sizes 5-8

ellen m'cCarn

McCarn Enterprises, Inc.
P.O. Box 210
Vincent, AL 35178

©2017 Ellen McCarn

Photography & Cover Design by Kerry McCarn-Ostir