

# LILLIAN #230

LEVEL OF DIFFICULTY



----- EASY -----

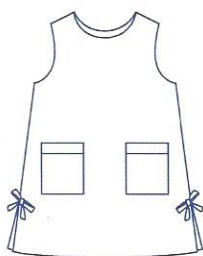
Lillian is the essential sleeveless shift dress. Your girl can wear this versatile, lined dress for any casual or dressy occasion. Lillian buttons down the back and has small slits at the bottom of the side seams for easier movement. The top of the slits may be trimmed with fabric or ribbon bows. Patch pockets are also included. For inspiration and tutorials, visit us at [www.childrenscornerpatterns.com](http://www.childrenscornerpatterns.com).

**SUGGESTED FABRICS:** Light to medium-weight woven fabrics such as broadcloth, lawn, seersucker or linen.

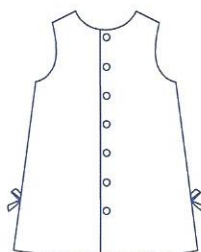
## NOTIONS:

- Buttons (1/2") – see table
- Optional – 1/2 yard of trim for pockets
- Optional – 1 yard of 3/8" ribbon for bow

**REQUIREMENTS:** Fabric requirements are the same for both dress & lining – both are needed. Fabric quantities allow for nap and are for 45" and 60" wide fabric. For sizes 6-12, consider sizing down.



**DRESS  
FRONT**



**DRESS  
BACK**

SIZE	3	4	5	6	7	8	10	12
<b>FABRIC REQUIREMENTS IN YARDS</b>								
Dress	5/8	3/4	3/4	7/8	7/8	7/8	1	1 1/8
Buttons	7	7	7	7	7	7	8	8
<b>BODY MEASUREMENTS</b>								
Chest	22"	22 1/2"	23 1/2"	24"	25"	26"	28"	30"
Waist	21 1/2"	22"	22 1/2"	23"	23 1/2"	24 1/2"	25"	26"
Height	34-37"	38-41"	41-44"	44-47"	48-51"	49-53"	52-57"	56-63"
Weight (lbs)	29-33	34-48	39-43	42-48	48-53	54-66	67-82	83-98
<b>FINISHED GARMENT MEASUREMENTS</b>								
Finished Length	19"	21 1/2"	22 3/4"	25 1/2"	26 1/4"	27 7/8"	31 1/2"	33"

SAME CLASSIC DESIGN WITH UPDATED:

- COVER
  INSTRUCTIONS
  PATTERN

**Children's Corner Patterns** © 2002, 2016  
 718 Thompson Lane, Ste 104, Nashville, TN 37204  
[www.childrenscornerpatterns.com](http://www.childrenscornerpatterns.com) 1-800-543-6915

Approved for use by home sewers only. Not for use by manufacturers.  
 Printed in the USA — CC230-1

