

JULIA #292S

Julia is a sophisticated waistline dress with classic styling featuring princess seams and a round yoke. The dress is fully lined and buttons in the back. The straight, capped sleeve accentuates the elegant bodice. The flattering skirt has inverted box pleats on the front and back and pockets that every girl loves. For inspiration, please visit us at childrenscornerpatterns.com

SUGGESTED FABRICS: For the dress, light to medium-weight fabrics such as broadcloth, chambray, corduroy, lawn, or pique. For the lining, lightweight fabrics such as batiste, broadcloth, or lawn.

NOTIONS:

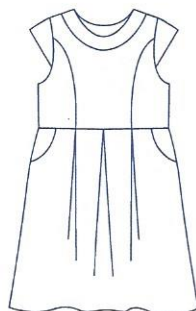
- Buttons 1/2" buttons – see table
- Corded Piping – 1 yard
- Lightweight fusible interfacing 60" wide (optional) – 1/2 yard

REQUIREMENTS: Fabric requirements are the same for both dress & lining – both are needed. Fabric quantities allow for nap. If chest measurement is between sizes, choose next size up.

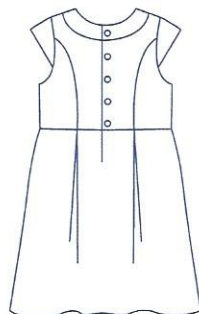
LEVEL OF DIFFICULTY



ADVANCED



FRONT



BACK

SIZE	18mo (1)	24mo (2)	3	4	5	6
FABRIC REQUIREMENTS IN YARDS						
Dress OR Lining 45"	1 1/8	1 1/4	1 3/8	1 1/2	1 5/8	1 5/8
Dress OR Lining 60"	7/8	1	1	1 1/8	1 1/8	1 1/4
Buttons	4	4	4	5	5	5
BODY MEASUREMENTS						
Chest	20"	21"	22"	22 1/2"	23 1/2"	24"
Waist	21"	21"	21 1/2"	22"	22 1/2"	23"
Height	29-31"	32-35"	34-37"	38-41"	41-44"	44-47"
Weight (lbs)	20-25	23-28	29-33	34-38	39-43	44-48
FINISHED GARMENT MEASUREMENTS						
Finished Length	17"	19 1/2"	21 1/2"	23 1/2"	25 1/2"	27 1/2"

Children's Corner Patterns © 2017

718 Thompson Lane, Ste 104, Nashville, TN 37204
www.childrenscornerpatterns.com 1-800-543-6915

Approved for use by home sewers only. Not for use by manufacturers.

Printed in the USA — CC292S-1

