

ELEANOR #300S

Eleanor is a sophisticated, fully lined, A-line shift dress. VIEW A has princess seams accented with tabs at the waist, straight short sleeves, and back zipper closure. VIEW B is the essential school girl dress with a pointed collar, pockets, slightly gathered capped sleeves trimmed with piping, and back button closure. The sleeves, optional pointed or piped Peter Pan collar, and optional pocket can be used with either dress.

SUGGESTED FABRICS: Light to medium-weight woven fabrics such as broadcloth, chambray, corduroy, lawn, or pique.

NOTIONS:

- VIEW A: Invisible zipper – see table; buttons (5/8" - 3/4") for tab – 2
- VIEW B: Buttons (1/2") – 4; corded piping for sleeve – 1 yard
- COLLAR: Corded piping for Peter Pan collar – 1 yard
- Featherweight fusible interfacing

REQUIREMENTS: Fabric quantities allow for nap. Fabric for dress and lining are the same requirements – BOTH are needed. For a contrasting collar, pocket trim and sleeve piping, you will need 3/8 yard of fabric.

LEVEL OF DIFFICULTY

VIEW A



ADVANCED

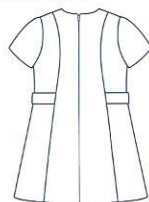
VIEW B



MODERATE



VIEW A
FRONT



VIEW A
BACK



VIEW B
FRONT



VIEW B
BACK

SIZE	6mo	12mo	18mo	24mo	3	4	5	6
FABRIC REQUIREMENTS IN YARDS								
View A 45"	7/8	7/8	7/8	1	1	1 1/8	1 3/8	1 1/2
View B 45"	7/8	7/8	7/8	1	1	1 1/8	1 1/4	1 1/4
View A & B 60"	7/8	7/8	7/8	1	1	1 1/8	1 1/4	1 1/4
View A Zipper	9"	9"	9"	9"	9"	9"	14"	14"
BODY MEASUREMENTS								
Chest	18 1/2"	19"	20"	21"	22"	22 1/2"	23 1/2"	24"
Waist	19 1/2"	20 1/2"	21"	21"	21 1/2"	22"	22 1/2"	23"
Height	25-27"	27-29"	29-31"	32-35"	34-37"	38-41"	41-44"	44-47"
Weight (lbs)	14-19	18-22	20-25	23-28	29-33	34-38	39-43	44-48
FINISHED GARMENT MEASUREMENTS								
Dress Length	14 1/2"	15"	16"	18"	19 1/2"	21 1/2"	22 1/2"	24 1/2"

Children's Corner Patterns © 2018

718 Thompson Lane, Ste 104, Nashville, TN 37204

www.childrenscornerpatterns.com

Approved for use by home sewers only. Not for use by manufacturers.

Printed in the USA — CC300S-1

