

# ELEANOR #300L

Eleanor is a sophisticated, fully lined, A-line shift dress. VIEW A has princess seams accented with tabs at the waist, straight short sleeves, and back zipper closure. VIEW B is the essential school girl dress with a pointed collar, pockets, slightly gathered capped sleeves trimmed with piping, and back button closure. The sleeves, optional pointed or piped Peter Pan collar, and optional pocket can be used with either dress.

**SUGGESTED FABRICS:** Light to medium-weight woven fabrics such as broadcloth, chambray, corduroy, lawn, or pique.

## NOTIONS:

- VIEW A: Invisible zipper – see table; buttons (3/4"-7/8") for tab – 2
- VIEW B: Buttons (1/2") – 5; corded piping for sleeve – 1 yard
- COLLAR: Corded piping for Peter Pan collar – 1 yard
- Featherweight fusible interfacing

**REQUIREMENTS:** Fabric quantities allow for nap. Fabric for dress and lining are the same requirements – BOTH are needed. For a contrasting collar, pocket trim and sleeve piping, you will need 3/8 yard of fabric.

SIZE	7	8	10	12	14
FABRIC REQUIREMENTS IN YARDS					
View A 45"	1 5/8	2	2 1/8	2 1/8	2 1/4
View B 45"	1 3/8	2	2 1/8	2 1/8	2 1/4
View A & B 60"	1 3/8	1 3/8	1 1/2	1 1/2	1 5/8
View A Zipper	14"	14"	18"	18"	18"
BODY MEASUREMENTS					
Chest	25"	26"	28"	30"	32"
Waist	23 1/2"	24 1/2"	25"	26"	27"
Height	48-51"	49-53"	52-57"	56-63"	60-67"
Weight (lbs)	48-53	54-66	67-82	83-98	99-110
FINISHED GARMENT MEASUREMENTS					
Dress Length	25 1/2"	27 1/2"	30"	31 1/2"	33"

Children's Corner Patterns © 2018

718 Thompson Lane, Ste 104, Nashville, TN 37204  
www.childrenscornerpatterns.com

Approved for use by home sewers only. Not for use by manufacturers.  
Printed in the USA — CC300L-1

## LEVEL OF DIFFICULTY

### VIEW A

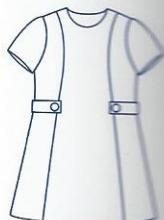


### ADVANCED

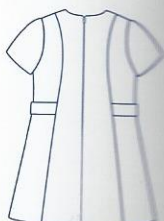
### VIEW B



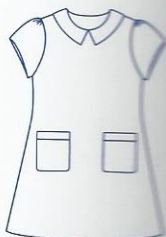
### MODERATE



VIEW A  
FRONT



VIEW A  
BACK



VIEW B  
FRONT



VIEW B  
BACK

