

APRIL #301

April is a dress perfect for May flowers inspired by the vintage pinafore. The bodice is framed with gentle ruffles and can be made with a smocked insert (VIEW B). Unlike the traditional pinafore, April has a lined bodice, so it can be worn on its own while maintaining modesty. The back bodice has a wrap-around facing for a couture finish. The dress closes in the back with buttons, has a continuous bound placket, and can be made with an optional sash.

SUGGESTED FABRICS: Light to medium-weight woven fabrics such as broadcloth, chambray, lawn, linen, or pique.

NOTIONS:

- Buttons (3/8") – see table
- VIEW B: Fabric for insert 3 1/2" x 45"; petite cording for piping – 1/2 yard; featherweight fusible interfacing (optional); Wonder Tape

REQUIREMENTS: Fabric quantities allow for nap. For a sash, add 1/3 yard of fabric.

LEVEL OF DIFFICULTY

VIEW A

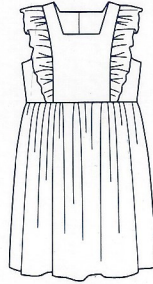


MODERATE

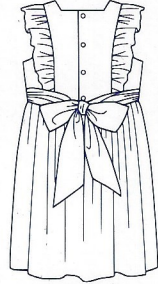
VIEW B



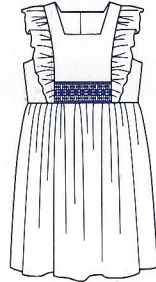
EXPERT



VIEW A
FRONT



VIEW A
BACK



VIEW B
FRONT



VIEW B
BACK

SIZE	7	8	10	12	14
FABRIC REQUIREMENTS IN YARDS					
Dress 45"	2	2 1/8	2 1/4	2 1/4	2 3/8
Dress 60"	1 1/2	1 1/2	2 1/4	2 1/4	2 3/8
Lining	3/8	1/2	1/2	1/2	1/2
Buttons	5	5	5	5	5
Rows to Smock	7	7	7	7	7
BODY MEASUREMENTS					
Chest	25"	26"	28"	30"	32"
Waist	23 1/2"	24 1/2"	25"	26"	27"
Height	48-51"	49-53"	52-57"	56-63"	60-67"
Weight (lbs)	48-53	54-66	67-82	83-98	99-110
FINISHED GARMENT MEASUREMENTS					
Dress Length	29 1/2"	31 1/2"	33 1/2"	35 1/2"	37 1/2"

