

ALLIE #290L

LEVEL OF DIFFICULTY



MODERATE

Allie is a pattern for your school girl. Allie is a fitted, unlined, buttons-in-the-front blouse or dress with interchangeable collars and sleeves. Choose from a classic Peter Pan collar or a pointed collar for a more mature look. She will love the contrasting ruffle on a straight sleeve with a short and long option for year-round comfort. The dress has an elastic casing at the waist in a contrasting fabric. Pants are not included in the pattern – the pants featured on the cover are from the Children’s Corner Jane.

SUGGESTED FABRICS: Medium-weight fabrics such as broadcloth, chambray, corduroy, or pique.

NOTIONS:

- Lightweight interfacing — 1/4 yard
- Buttons — see chart
- 1/4" Elastic — 1 yard
- Piping (Peter Pan collar) — 1 yard
- Contrast fabric for sleeve ruffles — 1/8 yard
- Contrast fabric for dress casing — 1/8 yard

REQUIREMENTS: Fabric quantities allow for nap. Requirements are the same for short and long sleeves. If chest measurement is between sizes, choose next size up.



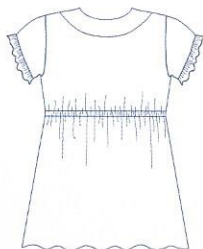
**BLOUSE
FRONT**



**BLOUSE
BACK**



**DRESS
FRONT**



**DRESS
BACK**

SIZE	7	8	10	12	14
FABRIC REQUIREMENTS IN YARDS					
Blouse 45"/60"	1 1/4	1 1/4	1 3/8	1 3/8	1 1/2
Dress 45"	1 7/8	2 1/2	2 5/8	2 3/4	2 7/8
Dress 60"	1 5/8	1 3/4	1 3/4	1 7/8	2
Buttons - Blouse	4	5	5	5	5
Buttons - Dress	7	9	10	10	10
BODY MEASUREMENTS					
Chest	25"	26"	28"	30"	32"
Waist	23 1/2"	24 1/4"	25"	26"	27"
Height	48-51"	49-53"	52-57"	56-63"	60-67"
Weight (lbs)	48-53	54-66	67-82	83-98	99-110
FINISHED GARMENT MEASUREMENTS					
Finished Length	29"	31"	33"	35"	37"
Long Sleeve Length	17 1/2"	18 1/2"	19 1/2"	20 1/2"	22"

Children's Corner Patterns © 2016

718 Thompson Lane, Ste 104, Nashville, TN 37204

www.childrenscornerpatterns.com 1-800-543-6915

Approved for use by home sewers only. Not for use by manufacturers.

Printed in the USA — CC290L-1

