

ALEX #303

Alex is a fully-lined romper and jumper with shirt for boys and girls. The romper and jumper feature a bib, elastic at the waist in the back, and straps that button on the bib and cross in the back. The bib can be made with a pocket and trimmed with piping or gathered trim. The romper can be made either short or long and with or without grippers. The shirt closes in the back, has a piped Peter Pan collar, and can be made with a straight short sleeve or a puff sleeve.

SUGGESTED FABRICS: Light to medium-weight woven fabrics such as broadcloth, chambray, corduroy, lawn, or pique.

NOTIONS:

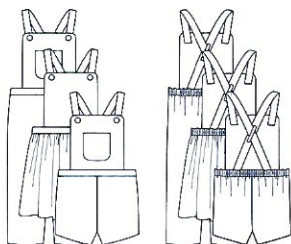
- JUMPER/ROMPER: Buttons (5/8" – 3/4") – 2; Elastic (3/4" wide) – 1/3 yard; Petite Piping or Edging – 1 yard; Grippers (optional); Featherweight interfacing
- SHIRT: Buttons (3/8") – see table; Petite Piping – 1 1/2 yard; Featherweight interfacing

REQUIREMENTS: Fabric quantities allow for nap. If not specified, requirements are for both 45" and 60" wide fabric.

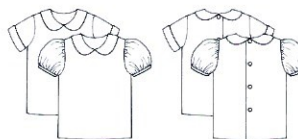
LEVEL OF DIFFICULTY



-----MODERATE-----



ROMPER/JUMPER



SHIRT
FRONT

SHIRT
BACK

SIZE	3mo	6mo	12mo	18mo	24mo	3	4	5	6
FABRIC REQUIREMENTS IN YARDS									
Short Romper 45"	7/8	1	1	1	1 1/8	1 1/8	1 1/8	1 1/8	1 1/8
Short Romper 60"	5/8	5/8	5/8	5/8	3/4	3/4	3/4	3/4	3/4
Long Romper 45"	7/8	1	1	1	1 1/8	1 1/8	1 1/4	1 1/4	1 3/8
Long Romper 60"	3/4	3/4	3/4	3/4	7/8	7/8	1	1	1
Short Romper Lining	5/8	5/8	5/8	5/8	5/8	5/8	5/8	5/8	3/4
Long Romper Lining	5/8	3/4	3/4	7/8	7/8	7/8	1	1	1 1/8
Jumper	5/8	5/8	3/4	3/4	7/8	7/8	1	1	1 1/8
Jumper Lining	5/8	5/8	5/8	5/8	5/8	3/4	3/4	3/4	3/4
Shirt	3/4	3/4	3/4	7/8	7/8	7/8	1	1	1
Shirt Buttons	4	5	5	5	5	6	6	6	6
BODY MEASUREMENTS									
Chest	18"	18 1/2"	19"	20"	21"	22"	22 1/2"	23 1/2"	24"
Waist	19"	19 1/2"	20 1/2"	21"	21"	21 1/2"	22"	22 1/2"	23"
Height	22-25"	25-27"	27-29"	29-31"	32-35"	34-37"	38-41"	41-44"	44-47"
Weight (lbs)	11-15	14-19	18-22	20-25	23-28	29-33	34-38	39-43	44-48
FINISHED GARMENT MEASUREMENTS									
Shoulder to crotch	15 1/2"	16 1/2"	17 1/2"	18 1/2"	19 1/2"	20 1/2"	21 3/4"	22 3/4"	23 3/4"
Long Romper Length	21"	23"	25"	27"	29"	31 1/2"	34"	36"	38"
Jumper Length	14"	14 1/2"	15 1/2"	16 1/2"	18 1/2"	20"	22"	23"	25"

Children's Corner Patterns © 2019

718 Thompson Lane, Ste 104, Nashville, TN 37204

www.childrencornerpatterns.com

Approved for use by home sewers only. Not for use by manufacturers.

Printed in the USA — CC303-1

