

SUTTON #314

Sutton is a classic daygown for baby. The girl's view features lace edging around the neck, front facing and sleeves. With ribbon attached to the beading at the neck and sleeves, this is sure to be an heirloom gown for her wardrobe. The boy's view features Swiss trim at the front facing with a bias band at the neck and sleeve edge, giving him a soft tailored look. Also included is a slip that buttons at the shoulder and features a flat lace edging at the hem. A shell edge at the neck and armhole is finished by hand.

SUGGESTED FABRICS: Light to medium-weight woven fabrics such as batiste, linen, broadcloth, or lawn.

NOTIONS:

GIRL'S VIEW

- Ribbon (1/8") – 2 yards
- Lace Edging (1/2") – 2 1/2 yards
- Swiss Entredeux Beading (1/4") – 7/8 yards
- Entredeux – 2/3 yards
- Buttons (1/4") – 7

BOY'S VIEW

- Swiss Trim (1/2") – 5/8 yards
- Entredeux – 2/3 yards
- Buttons (1/4") – 7

SLIP

- Lace Edging (1/2") – 1 yard
- Buttons (1/4") – 4

REQUIREMENTS: Fabric quantities allow for nap. If measurements are between sizes, choose the size based on weight of the baby.

SIZE	Newborn	3mo
FABRIC REQUIREMENTS IN YARDS		
Girl's Daygown 45"/60"	7/8	1
Boy's Daygown 45"/60"	7/8	1
Slip 45"/60"	3/4	3/4
BODY MEASUREMENTS		
Chest	16 1/2"	18"
Waist	17 1/2"	19"
Height	18-22"	22-25"
Weight (lbs)	7-10	11-15
FINISHED GARMENT MEASUREMENTS		
Daygown Length	19"	19 1/2"

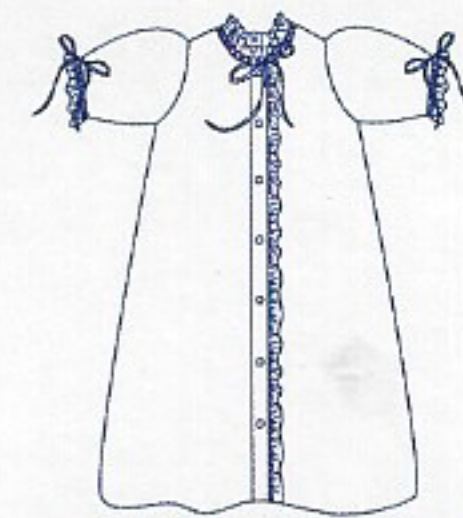
Children's Corner Patterns © 2022
 718 Thompson Lane, Ste 104, Nashville, TN 37204
 www.childrencornerstore.com

Approved for use by home sewers only. Not for use by manufacturers.
Printed in the USA — CC314-1

LEVEL OF DIFFICULTY



EXPERT



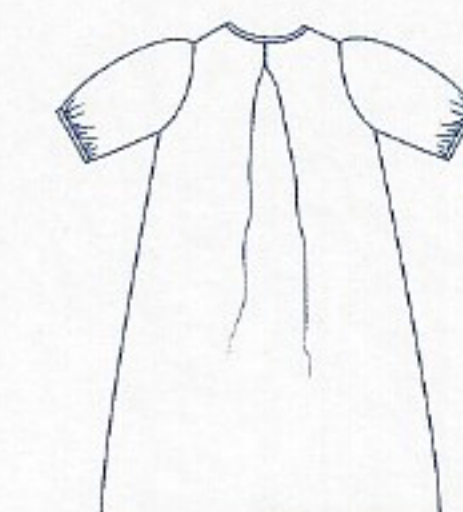
GIRL'S VIEW FRONT



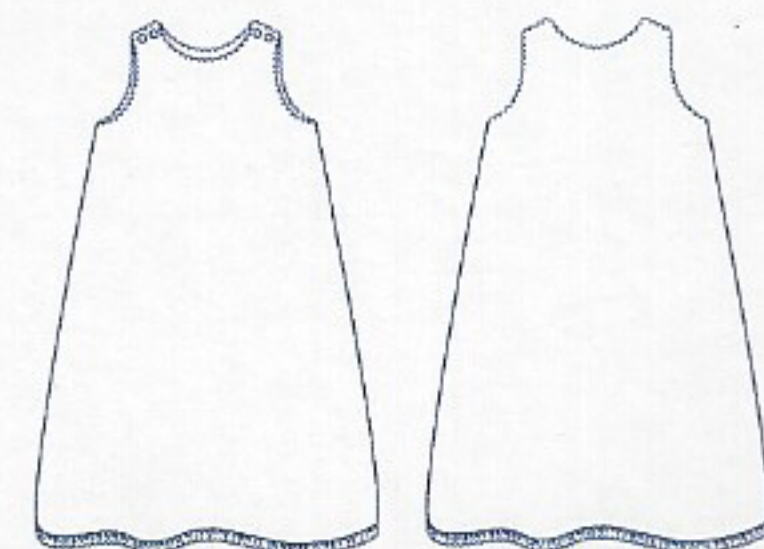
GIRL'S VIEW BACK



BOY'S VIEW FRONT



BOY'S VIEW BACK



SLIP FRONT

SLIP BACK

