

ROBERT #297

LEVEL OF DIFFICULTY



-----MODERATE-----

Robert is a classic button-down shirt and flat front shorts or pants suitable for all his adventures. Styled with a front chest pocket and an open reverse collar, the preppy shirt gives a more relaxed look while preserving a classic silhouette. The one-piece collar can be made pointed or rounded for a softer look. Choose from short sleeves or long, cuffed sleeves with a placket. The versatile, tailored shorts and pants have a flat front waistband, elastic in the back, and can be made unlined or fully lined with optional pockets.



SHIRT
FRONT

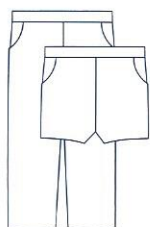


SHIRT
BACK

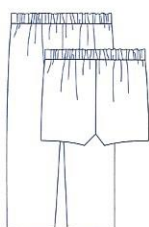
SUGGESTED FABRICS: For shirt, lightweight fabrics such as broadcloth, lawn, or linen. For shorts & pants, light to medium-weight fabrics such as broadcloth, corduroy, linen, pique or velveteen.

NOTIONS:

- Shirt Buttons (3/8") – see table; long sleeve cuff – 2
- Feather-weight Fusible Interfacing
- Shorts/Pants Elastic (3/4") – 1/3 yard



PANTS
FRONT



PANTS
BACK

REQUIREMENTS: For lined shorts and pants, main fabric and lining quantities are the same and BOTH are needed. Requirements are the same for short and long sleeves.

SIZE	6mo	12mo	18mo	24mo	3	4	5	6
FABRIC REQUIREMENTS IN YARDS								
Shirt 45/60"	7/8	1	1	1	1 1/8	1 1/8	1 1/4	1 1/4
Buttons	4	4	4	5	5	5	5	6
Shorts 45/60"	1/2	5/8	3/4	3/4	3/4	3/4	3/4	3/4
Pants 45/60"	3/4	7/8	7/8	1	1	1 1/8	1 1/8	1 1/4
BODY MEASUREMENTS								
Chest	18 1/2"	19"	20"	21"	22"	22 1/2"	23 1/2"	24"
Waist	19 1/2"	20 1/2"	21"	21"	21 1/2"	22"	22 1/2"	23"
Height	25-27"	27-29"	29-31"	32-35"	34-37"	38-41"	41-44"	44-47"
Weight (lbs)	14-19	18-22	20-25	23-28	29-33	34-38	39-43	44-48
FINISHED GARMENT MEASUREMENTS								
Shirt Length from Shoulder	11"	12"	13"	14"	15"	16"	17"	18"
Pants Outseam	13 1/2"	15 1/2"	17 1/2"	19 1/2"	21 1/2"	23 1/2"	25 1/2"	27 1/2"
Shorts Outseam	7 1/2"	8 1/4"	9"	9 1/2"	10"	10 1/2"	11 1/2"	12 1/2"

Children's Corner Patterns © 2018

718 Thompson Lane, Ste 104, Nashville, TN 37204

www.childrenscornerpatterns.com

Approved for use by home sewers only. Not for use by manufacturers.

Printed in the USA — CC297-1

