

PARKER'S PANTS #285

LEVEL OF DIFFICULTY



EASY

Parker's Pants is a quick and easy pattern for unlined pants and shorts with an elastic casing around the waist. Optional contrasting ruffle is included for the shorts or pants. Perfect for beginners, these pants or shorts are for boys or girls.

SUGGESTED FABRICS: Light to medium-weight fabrics like broadcloth, corduroy, lawn, twill and pique.

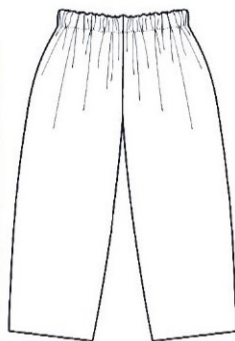
NOTIONS:

- Elastic (3/4" wide) – 5/8 yard (sizes 6mo – 4) or 7/8 yard (sizes 5 – 14)

REQUIREMENTS: Fabric quantities allow for nap. Contrast fabric for optional ruffle is 1/4 yard for all sizes.



SHORTS



PANTS

| SIZE | 6mo | 12mo | 18mo | 24mo | 3 | 4 |
|--------------------------------------|---------|---------|---------|---------|---------|---------|
| FABRIC REQUIREMENTS IN YARDS | | | | | | |
| Shorts 45"/60" | 1/2 | 1/2 | 1/2 | 1/2 | 1/2 | 1/2 |
| Pants 45"/60" | 5/8 | 5/8 | 3/4 | 3/4 | 7/8 | 7/8 |
| BODY MEASUREMENTS | | | | | | |
| Chest | 18 1/2" | 19" | 20" | 21" | 22" | 22 1/2" |
| Waist | 19 1/2" | 20 1/2" | 21" | 21" | 21 1/2" | 22" |
| Height | 25-27" | 27-29" | 29-31" | 32-35" | 34-37" | 38-41" |
| Weight (lbs) | 14-19 | 18-22 | 20-25 | 23-28 | 29-33 | 34-38 |
| FINISHED GARMENT MEASUREMENTS | | | | | | |
| Shorts Length | 6 1/2" | 7 3/4" | 9" | 9 1/2" | 10" | 10 1/2" |
| Pants Length | 13" | 15 1/4" | 17 1/2" | 19 1/2" | 21 1/2" | 23 3/4" |

| SIZE | 5 | 6 | 7 | 8 | 10 | 12 | 14 |
|--------------------------------------|---------|---------|---------|---------|--------|--------|---------|
| FABRIC REQUIREMENTS IN YARDS | | | | | | | |
| Shorts 45" | 3/4 | 7/8 | 7/8 | 7/8 | 1 1/4 | 1 1/4 | 1 3/8 |
| Shorts 60" | 5/8 | 5/8 | 5/8 | 5/8 | 3/4 | 3/4 | 7/8 |
| Pants 45" | 1 1/4 | 1 1/2 | 1 1/2 | 1 5/8 | 2 1/4 | 2 3/8 | 2 1/2 |
| Pants 60" | 1 | 1 | 1 1/8 | 1 1/8 | 1 1/4 | 1 1/4 | 1 3/8 |
| BODY MEASUREMENTS | | | | | | | |
| Chest | 23 1/2" | 24" | 25" | 26" | 28" | 30" | 32" |
| Waist | 22 1/2" | 23" | 23 1/2" | 24 1/2" | 25" | 26" | 27" |
| Height | 41-44" | 44-47" | 48-51" | 49-53" | 52-57" | 56-63" | 60-67" |
| Weight (lbs) | 39-43 | 44-48 | 48-53 | 54-66 | 67-82 | 83-98 | 99-110 |
| FINISHED GARMENT MEASUREMENTS | | | | | | | |
| Shorts Length | 11 1/2" | 12 1/2" | 13 3/4" | 15" | 16" | 17" | 17 3/4" |
| Pants Length | 25 1/2" | 27 1/2" | 30" | 32 1/2" | 34" | 36" | 38" |

Children's Corner Patterns © 2013, 2017, 2019
 718 Thompson Lane, Ste 104, Nashville, TN 37204
www.childrenscornerpatterns.com

Approved for use by home sewers only. Not for use by manufacturers.
 Printed in the USA — CC285

