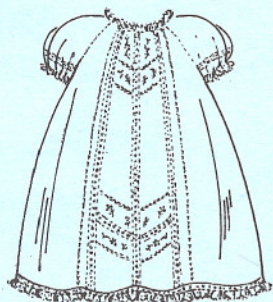


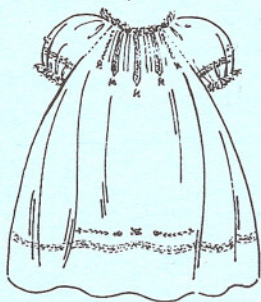


# Baby Rose Raglan Dresses

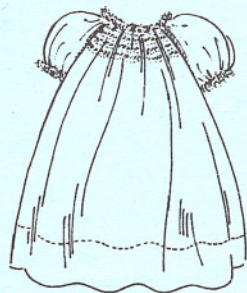
Patterns by The Old Fashioned Baby show the charm and daintiness that belong to every baby. Baby will be well and smiling in little garments made by Mother. These garments are designed to give baby the greatest comfort and freedom of movement. They come with complete, illustrated, easy to follow instructions.



View 1



View 2



View 3

**Baby Rose Raglan Dresses** is the sweetest baby dress pattern ever. **View 1** is an elegant little dress with its' lovely lace embellishment and is surprisingly easy to make. Lace insertion graces the front with embroidered accents. Entredeux and lace finish the neck and sleeves. The hem features lace insertion edged with gathered lace. **View 2** is slightly gathered around the neck and features tucks and lace insertion at the yoke bordered with embroidery. The hem features lace insertion with embroidered accents as do the sleeves. Entredeux is used to attach the sleeves. **View 3** is simple in design and sweet as can be. Featherstitching and Seed Stitch embellish the front yoke and Featherstitching is worked along the shoulder seams. The neck is gently gathered and an embroidered Running Stitch accents the hem. **Baby Slip** pattern is included, designed in the Gertrude style and embellished with embroidery.

**SIZE:** Infant (7-18 lbs.) & 6 - 12 Months (15-22 lbs.)

**45" Fabric Requirements shown. Fabric suggestions:** 100% cotton Pima or Swiss Batiste, Lawn, Voile, Handkerchief Linen, Silk Broadcloth and Poly/cotton Batiste.

**All Dresses: Fabric - 3/4 yd., 4 buttons 3/8",**

**VIEW 1-** Baby Entredeux: 1 7/8 yd., 3/8" wide Lace Edging for Neck & Sleeves: 1 3/8 yd., 1/2"-5/8" wide Lace Edging for Hem: 1 7/8 yd., 3/8"-1/2" wide Lace Insertion: 3 1/2 yds.

**VIEW 2 -** Baby Entredeux: 1 7/8 yd., 3/8" wide Lace Edging for Neck & Sleeves: 1 3/8 yd., 3/8"-1/2" wide Lace Insertion: 2 1/3 yd.

**VIEW 3** Baby Entredeux: 7/8 yd., 3/8" wide Lace Edging: 1 3/8 yd. Anchor Blue embroidery floss #128, #10 or #11 Sharps needles

**SLIP -** Fabric: 1/2 yd., 1/4" buttons: 4, 1/2" wide Lace Edging: 1 1/8 yd.

© Copyright, 2004, Jeannie Baumeister. All rights reserved. No part of this pattern may be reproduced in any form with out written permission from the designer. Garments made from this pattern may not be sold. Purchaser of the pattern may pay a dressmaker to make garments for her use and for gifts. No manufacturing of garments allowed.

**THE OLD FASHIONED BABY**  
**BATON ROUGE, LA. (225) 924-7445 (shop)**