

#287 Laura

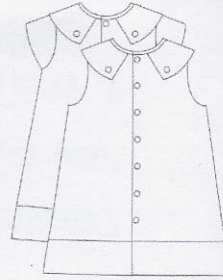
Laura is a dress or top that can be sleeveless or have short piped sleeves. The top of the garment features a few gathers at the front neckline and has a partial two-piece collar that buttons to the dress in front and back. The neckline is finished with a bias band that is completely stitched by machine. The garment bottom has a contrasting band that is suitable for an embroidered monogram. Garment buttons down the back.

The sleeveless garment is completely lined. The garment with sleeves has the option of being completely lined or unlined. Available in size packages 3-6 and 7-12

Difficulty: ● ● ○ ○ Moderate

Please visit www.childrenscornerinc.com for explanation of difficulty ratings, and for help from our video tutorials.

- Notions:**
- 4 Decorative Buttons for Collar
 - 1/2" Buttons for fasteners (see below for number)
 - Contrasting fabric (see below for yardage)



Back View



Top with Parker's Pants

Size	3	4	5	6	7	8	10	12
Fabric Requirements in Yards (45" and 60" wide except where noted in chart) & Notions								
Collar & Bands or Bands Only	1/4	1/4	1/4	1/4	3/8	3/8	3/8	3/8
Collar Only	1/4	1/4	1/4	1/4	1/4	1/4	3/8	3/8
Dress w Sleeves	1 1/8	1 1/8	45": 1 5/8 60": 1 1/4	45": 1 3/4 60": 1 1/4	45": 1 3/4 60": 1 1/4	45": 2 60": 1 3/8	45": 2 1/8 60": 1 3/8	45": 2 1/2 60": 1 1/2
Sleeveless Dress	1 1/8	1 1/8	45": 1 5/8 60": 1 1/4	45": 1 3/4 60": 1 1/4	45": 1 5/8 60": 1 1/4	45": 1 7/8 60": 1 3/8	45": 1 7/8 60": 1 3/8	45": 2 1/4 60": 1 1/2
Top with Sleeves	1	1	1	1	45": 1 1/4 60": 1 1/8	45": 1 5/8 60": 1 1/8	45": 1 5/8 60": 1 1/4	45": 1 1/2 60": 1 1/4
Sleeveless Top	1	1	1	1	45": 1 1/4 60": 1 1/8	45": 1 1/4 60": 1 1/8	45": 1 3/8 60": 1 1/4	45": 1 5/8 60": 1 1/4
Dress Lining	3/4	3/4	7/8	7/8	1	1	45": 1 1/4 60": 1	45": 1 3/4 60": 1 1/8
Top Lining	5/8	5/8	5/8	5/8	5/8	3/4	3/4	7/8
Buttons: Dress	7	7	7	8	8	9	9	10
Buttons: Top	5	5	5	5	5	6	6	7
Finished Garment Measurements in Inches								
Dress Length from Shoulder	20 1/2	22 1/2	24	26 1/2	28	29 1/2	32	34 1/2
Tunic Length from Shoulder	16	17	18	19	20	21	23	25

©Copyright 2014 Children's Corner
Approved for use by home-sewers only
Not for use by manufacturers
Printed in USA

Children's Corner
718 Thompson Lane
Nashville, TN 37204
1-800-543-6915