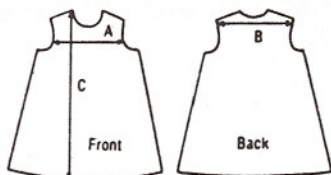


## Girls Measurement Chart

Size	18 mo. 1	2	3	4	5	6	6x-7	8
Front yoke	9	9	9½	9½	9¾	10¼	11	11½
Back yoke	9¼	9½	9¾	9¾	10	10½	11½	11¾
Length	18½	20	22	25	28	30	32	34
Armband	7½	7¾	8¼	8¾	9¼	9¾	9½	9¾
Neck	10½	11	11¼	11½	11¾	12	13	13



All measurements given in inches.

A Finished measurement of front yoke

B Finished measurement of back yoke at shoulders

C Length of garment from highest point on shoulder

About the pattern:

Lee is a basic yoke dress that may be smocked or not. View A is smocked an equal number of rows front and back. View B is a basic yoke dress smocked front only with a lowered back yoke line. Views A and B are piped at the collar, sleeve and yoke lines. View C is a basic yoke dress with a gathered skirt and a smocked collar. View C is finished with lace at the sleeve.

Note: If view B is to be smocked, a specific number of rows should be pleated.

Use the chart below.

Size 1: 9 Rows

Size 3: 12 Rows

Size 5: 13 Rows

Size 7: 14 Rows

Size 2: 10 Rows

Size 4: 12 Rows

Size 6: 13 Rows

Size 8: 16 Rows

For View A 4-16 rows may be pleated.

### 45" Fabric Requirements:

Size 1:	1⅞ yds.
Size 2:	2 yds.
Size 3:	2¼ yds.
Size 4:	2½ yds.
Size 5:	2¾ yds.
Size 6:	2¾ yds.
Size 7:	3 yds.
Size 8:	3¼ yds.

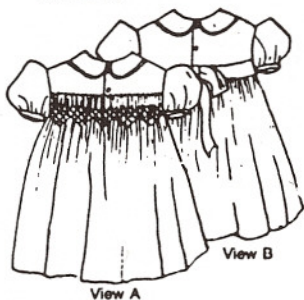
Smocked collar  
and lace for sleeve:

Sizes 1-8: ½ yard Swiss Batiste  
3¾ yards lace edge

### Notions:

Cotton cording: 1 ¼ yards

Buttons: 4



Suggested Fabrics: Broadcloth, pima cotton,  
batiste, lawn, gingham, calico,  
lightweight wools & wool blends