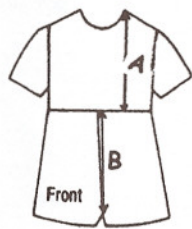


Taylor is the perfect summer romper for backyard visits or a trip to the beach. The classic lines of this romper feature corded piping or rickrack at the neckline, armholes and neckline and at leg openings. This button-on-the-shoulder romper is closed at the crotch with snaps. The boy's romper has elastic at the legs and the girl's romper has elastic and a ruffle.

**Fabric requirements:**

| Size   | Romper  | Romper Lining | Piping or Rickrack | Crotch Length from Shoulder |
|--------|---------|---------------|--------------------|-----------------------------|
| 3 mo.  | 5/8 yd. | 5/8 yd.       | 2 3/8 yd.          | 15 1/2"                     |
| 6 mo.  | 5/8 yd. | 5/8 yd.       | 2 1/2 yd.          | 16 1/2"                     |
| 9 mo.  | 5/8 yd. | 5/8 yd.       | 2 5/8 yd.          | 17"                         |
| 12 mo. | 5/8 yd. | 5/8 yd.       | 2 5/8 yd.          | 17 1/2"                     |
| 18 mo. | 3/4 yd. | 3/4 yd.       | 2 3/4 yd.          | 18"                         |
| 24 mo. | 3/4 yd. | 3/4 yd.       | 3 yd.              | 19 1/2"                     |

Notions: 2 1/2" buttons, 3 snaps

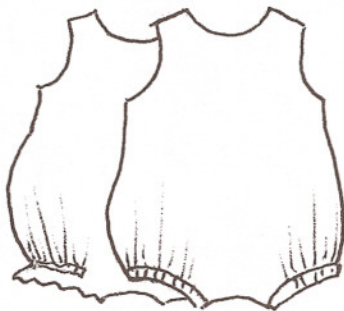


- A High point on shoulder to waist measurement
- +B Front waist to crotch measurement
- =C Shoulder to crotch measurement

**Choosing a Size**

©Copyright 2004  
Children's Corner

The Children's Corner  
718 Thompson Lane  
Nashville, TN 37204  
1-800-543-6915



**Back View**