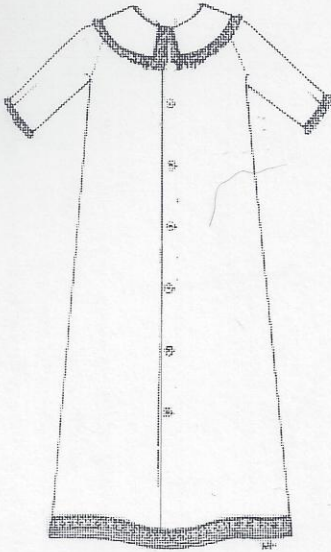


A-Line Christening Gowns II
Designs for Baby Boys

Back view:



Size Guidelines

Preemie — 5 - 6 pounds
Newborn — 7 - 12 pounds
Infant — 8 - 18 pounds
Large — 18 - 22 pounds

Yardages:

The measurements below are *liberal estimates*. Exact measurement of pattern pieces may result in the purchase of *less* yardage. Because each seamstress will vary in the selection of trims, measurements are given by each individual section.

45" fabric:

Preemie: 1 3/4 yd.
Newborn, Infant, and Large: 2 yd.

Swiss eyelet fabric:

For Christening gown: 1 2/3 yd.
Additional fabric for sleeves with eyelet hem: 2/3 yd.

Entredeux or flat trim:

Neckline: 15"
Large collar: 1 1/4 yd.
Smaller collar: 1 yd
Sleeves: 1/2 yd.
Hemline: 1 5/8 yd.

Lace edging (to be gathered):

Neckline: 30"
Large collar: 2 1/8 yd.
Smaller collar: 1 7/8 yd.
Sleeves: 1 yd.
Hemline: 2 1/2 yd.

Beading for sleeves: 1/2 yd.

1/4" - wide double-faced satin ribbon: 1 1/2 yd.

7 - 8 3/8" buttons

Embroidery thread (optional)

The designs presented in "A-Line Christening Gowns II" are ideal for baby boys and are easy to sew. Variations include an heirloom gown with a lace band and pintucks, a monogrammed design with released tucks and a Peter Pan collar, and a quick and easy gown made of Swiss eyelet fabric. Sizes newborn, infant, and large are 36" long, while the preemie gown is 27" long. Sleeve variations include a long puff sleeve, an elbow-length puff sleeve, and a long straight sleeve which may be embellished or plain. This long straight sleeve may also be adapted to a three-quarter length sleeve. Fullness may be added to the A-line design with the addition of pintucks. The gown has a back button closing.

The "A-Line Christening Gowns II" pattern is one that can be used over and over in a variety of ways, providing almost endless opportunities for creating one-of-a-kind designs. Design details may be adapted for either infant boys or infant girls. While the emphasis of the designs is on infant boys, they may be used for infant girls, too, based on the trim selection. The area of the lace panel may be used for hand or machine embroidery, with strips of insertion used on either side. This is a versatile pattern that may be used and enjoyed for a variety of projects.



Ginger Snaps Designs • P. O. Box 240728 • Montgomery, AL 36124
1-334-567-4239 • FAX 1-334-514-0014 • nancycoburn@aol.com

© Copyright, 2008. Nancy Coburn

All rights reserved. No part of this pattern may be reproduced or copied without permission in writing from the author.

Printed in U.S.A.