

Johnny is the perfect button-on-the-shoulder romper. It can be made smocked or unsmocked. Classic in design, it has both center front and back seams and side seams for a better fit. It can be made short or long. The crotch of the romper can be finished with snaps. Pattern has an optional patch pocket on the front and includes a pattern for the appliquéd dog. The smocking design shown on cover is "Primarily Colors" by Little Memories. Pattern for shirt or blouse is included.

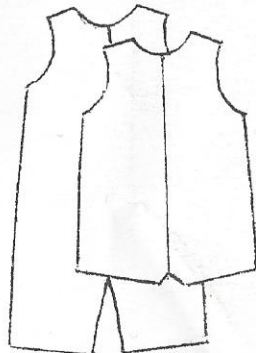
Fabric requirements:

Size	Short Romper	Short Romper Lining	Long romper	Long romper lining	Smocked Inset	Shirt/ blouse
3 mo.	5/8 yd.	5/8 yd.	3/4 yd.	3/4 yd.	1/8 yd.	5/8 yd.
6 mo.	5/8 yd.	5/8 yd.	3/4 yd.	3/4 yd.	1/8 yd.	5/8 yd.
9 mo.	5/8 yd.	5/8 yd.	3/4 yd.	3/4 yd.	1/8 yd.	3/4 yd.
12 mo.	5/8 yd.	5/8 yd.	7/8 yd.	7/8 yd.	1/8 yd.	3/4 yd.
18 mo.	3/4 yd.	3/4 yd.	1 yd.	1 yd.	1/8 yd.	3/4 yd.
24 mo.	3/4 yd.	3/4 yd.	1 yd.	1 yd.	1/8 yd.	3/4 yd.
3	3/4 yd.	3/4 yd.	1 yd.	1 yd.	1/8 yd.	7/8 yd.
4	7/8 yd.	7/8 yd.	1 1/8 yd.	1 1/8 yd.	1/8 yd.	7/8 yd.

Notions: 4 (1/2") buttons for romper, 4 (3/8") buttons for shirt, cording for piping (optional) snaps for crotch (optional)

©Copyright 2006
Children's Corner

The Children's Corner
718 Thompson Lane
Nashville, TN 37204
1-800-543-6915



Back View