

This pattern is multi-sized. It is recommended that you trace the pattern pieces onto lightweight interfacing. Refer to detailed body measurements below, make adjustments to pieces before cutting. See instructions for detailed listing of manufacturers of fabrics and trims.

Empire Waist Dress, Pinafore & Bib



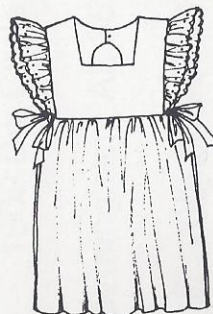
Short Sleeve Dress



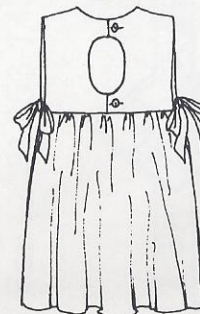
(Back View)



Long Sleeve Dress



Pinafore



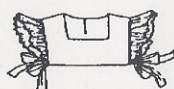
Pinafore (Back View)



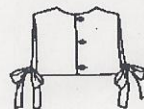
Smocked Pinafore



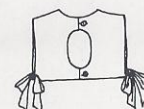
Smocked Bib



Unsmocked Bib



Plain (Back View)



Keyhole (Back View)

Small

Large

Sizes (3 4 5 6) (7 8 10 12 14)

Body Measurements

Chest	22"	23"	24"	25"	26"	27"	28"	29"	30"
Finished Length	20"	22"	24"	26"	28"	30"	32"	34"	36"

45" Material Requirements

Short Sleeve Dress	2 1/8	2 1/8	2 1/4	2 1/2	2 1/2	2 3/4	2 7/8	3	3 1/8
Long Sleeve Dress	2 1/4	2 1/2	2 1/2	2 3/4	2 3/4	2 7/8	3 1/8	3 1/4	3 3/8
Bib, Collars, Cuffs	3/4	7/8	7/8	1	1	1	1	1	1
Apron, Collars, Cuffs	1 1/4	1 3/8	1 1/2	1 5/8	1 2/3	1 3/4	1 7/8	2	2 1/8
Bib Only (unsmocked)	2/3	3/4	3/4	7/8	7/8	7/8	7/8	7/8	7/8
Eyelet Ruffle (unsmocked bib)	1 1/2	1 1/2	1 1/2	1 1/2	1 3/4	1 3/4	1 3/4	1 3/4	1 3/4

Smocking Rows (Needle spacing of 16 row pleater) 8 9 10 11 12 12 13 13 13

Pleating Rows 10 11 12 13 14 14 15 15 15

Notions and Other Requirements Cording or Piping (Collars, Sleeves, Yokes) - 2 1/2 yards 1/2" Buttons - 3 or 4 each for Dress and Bib