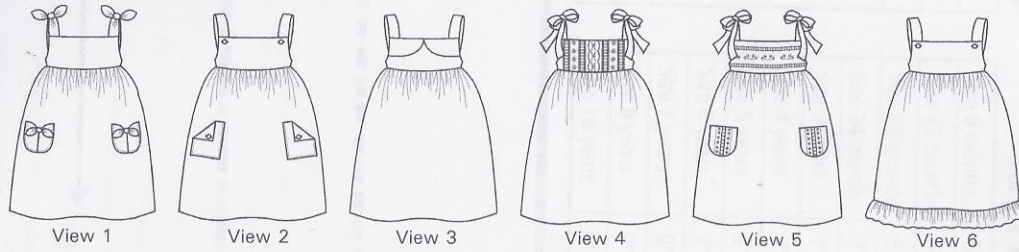


So Easy to Make!

Kimberly Summer Dress Collection

132 Shelby Kate Revised
New Fit and Lengths, New Designs and More Detailed Instructions



Easy fit and easy sew summer dresses in so many sizes! View 1 has shoulder ties and pocket ties. View 2 has button straps and pockets. View 3 has front yoke collar with back buttoned straps. View 4 has silk ribbon ties and Swiss insertion and beading for heirloom style. View 5 heirloom style with wide Swiss insertion and shaped pockets. View 6 has button straps and ruffle on skirt. So many styles for a fun summer collection.

Detailed instructions and illustrations are included for quick and easy construction.

"Piping How To's" and "How to Make Piping" instructions included!

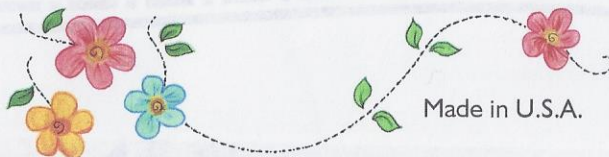
	6 months	12 months	18 months	24 months	3 years	4 years	5 years	6 years	7 years	8 years	10 years
View 1 Garment: 45" With/Without Nap 54" With/ Without Nap Lining: 45"-54" With/Without Nap	1-1/4 yard 1 yard 3/8 yard	1-3/8 yards 1-1/8 yards 3/8 yard	1-1/2 yards 1-1/8 yards 3/8 yard	1-5/8 yards 1-1/4 yards 3/8 yard	1-3/4 yards 1-3/8 yards 1/2 yard	1-3/4 yards 1-1/2 yards 1/2 yard	2 yards 1-5/8 yards 1/2 yard	2 yards 1-5/8 yards 1/2 yard	2-1/8 yards 1-3/4 yards 5/8 yard	2-1/4 yards 1-3/4 yards 5/8 yard	2-3/8 yards 2 yards 5/8 yard
View 2 Garment: 45" With/Without Nap 54" With/ Without Nap Lining: 45"-54" With/Without Nap	1-3/8 yard 1-1/8 yard 3/8 yard	1-1/2 yards 1-1/4 yards 3/8 yard	1-5/8 yards 1-1/4 yards 3/8 yard	1-3/4 yards 1-3/8 yards 3/8 yard	1-7/8 yards 1-1/2 yards 1/2 yard	2 yards 1-5/8 yards 1/2 yard	2-1/8 yards 1-5/8 yards 1/2 yard	2-1/8 yards 1-3/4 yards 1/2 yard	2-1/4 yards 1-7/8 yards 5/8 yard	2-3/8 yards 1-7/8 yards 5/8 yard	2-1/2 yards 2-1/8 yards 5/8 yard
View 3 Garment & Lining: 45" With/Without Nap 54" With/ Without Nap Collar: 45"-54" With/Without Nap	1-1/4 yards 1 yard 1/8 yard	1-3/8 yards 1-1/8 yards 1/8 yard	1-1/2 yards 1-1/8 yards 1/8 yard	1-5/8 yards 1-1/4 yards 1/8 yard	1-3/4 yards 1-3/8 yards 1/8 yard	1-3/4 yards 1-1/2 yards 1/8 yard	2 yards 1-5/8 yards 1/8 yard	2 yards 1-5/8 yards 1/8 yard	2-1/8 yards 1-3/4 yards 1/4 yard	2-1/4 yards 1-3/4 yards 1/4 yard	2-3/8 yards 2 yards 1/4 yard
Views 4 & 5 Garment & Lining: 45" With/Without Nap 54" With/ Without Nap 1-1/4"-2" Silk Ribbon for Shoulder Ties	1-1/8 yard 1-1/8 yard 1-1/2 yards	1-1/8 yards 1-1/8 yards 1-1/2 yards	1-1/4 yards 1-1/4 yards 1-1/2 yards	1-3/8 yards 1-1/4 yards 1-1/2 yards	1-1/2 yards 1-3/8 yards 1-3/4 yards	1-5/8 yards 1-1/2 yards 1-3/4 yards	1-3/4 yards 1-5/8 yards 1-3/4 yards	1-7/8 yards 1-5/8 yards 2 yards	2 yards 1-3/4 yards 2 yards	2 yards 1-3/4 yards 2 yards	2-1/8 yards 2 yards 2 yards
View 6 Garment: 45"-54" With/Without Nap Ruffles and Lining: 45"-54" With/Without Nap	5/8 yard 3/4 yard	3/4 yard 1 yard	7/8 yard 1 yard	7/8 yard 1-1/4 yards	1 yard 1-1/4 yards	1-1/8 yards 1-1/4 yards	1-1/8 yards 1-1/4 yards	1-1/4 yards 1-3/8 yards	1-3/8 yards 1-5/8 yards	1-3/8 yards 1-5/8 yards	1-1/2 yards 1-3/4 yards
Skirt Circumference All Views	58-1/2"	62-1/2"	62-1/2"	66-1/2"	66-1/2"	70-1/2"	70-1/2"	74-1/2"	78-1/2"	78-1/2"	78-1/2"

Standard Body Measurements:

	6 mos.	12 mos.	18 mos.	24 mos.	3 years	4 years	5 years	6 years	7 years	8 years	10 years
Chest	17-1/2"	18-1/2"	19-1/2"	20"	21"	22"	23"	24"	25"	26-1/2"	28"
Waist	18-1/2"	19"	19-1/2"	20"	20-1/2"	21"	21-1/2"	22"	22-1/2"	23"	24"
Hip	18"	19"	20"	21"	22"	23"	24"	25"	26-1/2"	28"	30"

Suggested Fabrics: Medium to lightweight fabrics including cotton, poly-cotton blends, linen, novelty cotton prints, gingham, seersucker, and pique. **Notions:** Pattern tracing paper or tissue paper. Thread to match fabrics.

Buttons: **View 1, 3, 4 & 5** Sizes 6 m-5y (3) 1/2" - 5/8" buttons; Sizes 6-10y (4) 1/2" - 5/8" buttons. **View 2** Sizes 6m-5y (7) 1/2" - 5/8" buttons; Sizes 6-10y (8) 1/2" - 5/8" buttons. **View 6** Sizes 6m-5y (5) 1/2" - 5/8" buttons; Sizes 6-10y (6) 1/2" - 5/8" buttons



Made in U.S.A.

Janis Barham Shelton
1999 Sam Lackey Road
Toomsba, MS 39364
Phone 601-679-5933
Email: janis05@bellsouth.net
www. BonnieBlueDesigns.com
Facebook: Bonnie Blue Designs

Bonnie Blue Designs®

©Copyright Bonnie Blue Designs® 2015