

## Baby's First Daygowns Three Classic Designs

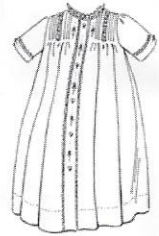
Patterns by The Old Fashioned Baby show the charm and daintiness that belong to every baby. Baby will be well and smiling in little garments made by Mother. These garments are designed to give baby the greatest comfort and freedom of movement. They come with complete, illustrated, easy to follow instructions.



View 1



View 2



View 3

**Baby's First Daygowns** will become your favorite pattern to use for quick and beautiful Daygowns to keep and give away. There are three very different views, each with special details. And this pattern includes the standard **Infant Size** along with the Take Me Home, **Newborn size**. **View 1. is a Classic Daygown** with a simple, sweet embroidery design, bias binding at the neck and Long Sleeves that are pulled up with a ribbon. **View 2 Daygown has a lovely Lace Yoke**, featuring lace insertion bordered with lace edging. Pretty embroidery is nestled inside the lace yoke. The neck is finished with entredeux and gathered lace. The long sleeves have a lace trimmed cuff. Lace edging is stitched at the hemline for an elegant finish. **View 3 Daygown features old fashioned Tucks** at the yoke. Lace or embroidery can be used to embellish the space between the tucks and instructions for both are included. The neck edge is finished with entredeux and gathered lace edging. The lace edging extends (ungathered) down both sides of the front facing as well. The 3/4 length sleeve has a lace trimmed cuff. **Gertrude Slip** included in this pattern. Patterns come with complete illustrated, easy to follow instructions for making and embroidering the garments. Embroidery Designs included.

**Size - Infant to 18 lbs. and Newborn (7 to 13 lbs.) included in this pattern**

**Suggested Fabrics** - Cotton Batiste and Lawn, Swiss Batistes & Lawn, Linen, Swiss Flannel,

**All Daygowns** need 5 Mother of Pearl Buttons (1/4" or 3/8" wide), Embroidery Floss

**View 1.** - 45" Fabric: 1 yard, Optional- 1/8" or 1/4" wide Swiss Edging for front Facing: 1 1/4 yard, 1/4" wide Ribbon: 1 1/3 yard

**View 2.** - 45" Fabric: 1 yard, 3/8" wide Lace Insertion: 1/2 yard, 3/8" or 1/2" wide Lace Edging: 3 3/8 yards, Entredeux: 3/8 yard

**View 3.** 45" Fabric: 1 yard, 3/8" or 1/2" wide Lace Edging: 2 3/8 yards, Entredeux: 3/8 yards, 3/8" wide Lace Insertion if desired between Tucks: 1/3 yd

**Slip** - Fabric: 5/8 yard, 1/4" wide Buttons: 4, Narrow lace edging: 1 1/4 yard

The Old Fashioned Baby Designs, 14335 Awtrey Drive, Prairieville, LA 70769

Copyright 2012 Jeannie Baumeister. All rights reserved. No part of this pattern may be reproduced in any form with out written permission from the designer. Not for commercial use.